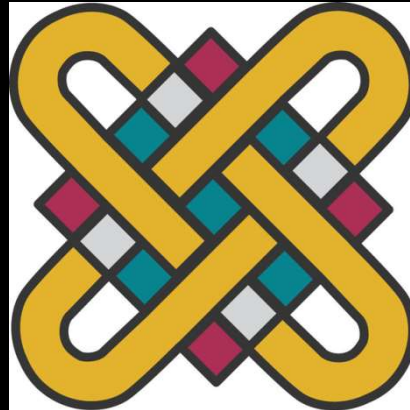


**ΠΑΝΕΠΙΣΤΗΜΙΟ ΔΥΤΙΚΗΣ ΜΑΚΕΔΟΝΙΑΣ
ΤΜΗΜΑ ΕΙΚΑΣΤΙΚΩΝ ΚΑΙ ΕΦΑΡΜΟΣΜΕΝΩΝ
ΤΕΧΝΩΝ**



**1^ο Εργαστήριο Ζωγραφικής
Κύκλος**

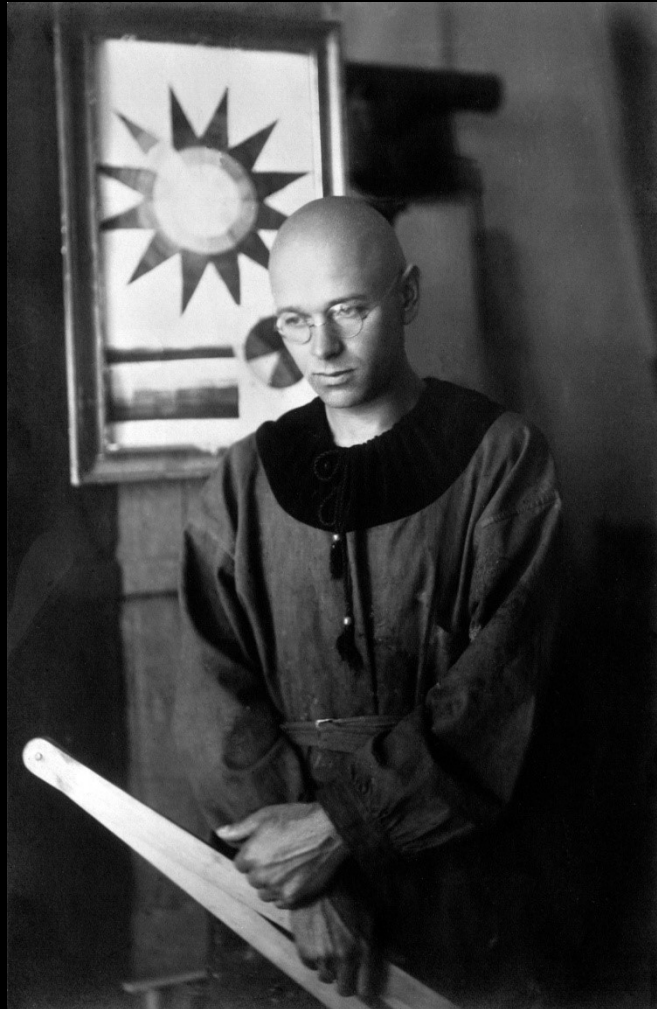
Το Χρώμα

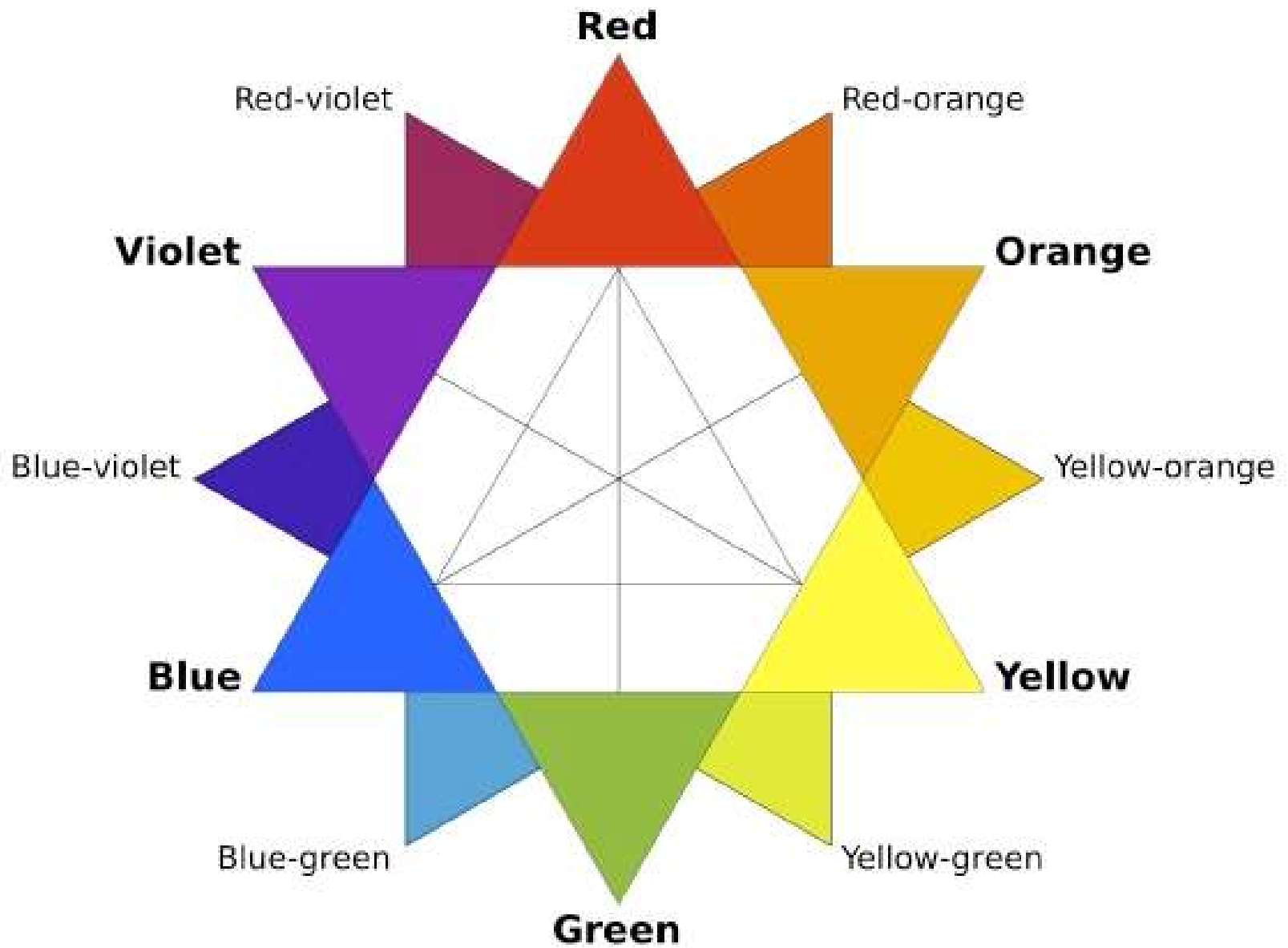
**Γιάννης Ζιώγας
Αναπληρωτής Καθηγητής**

Johannes Itten

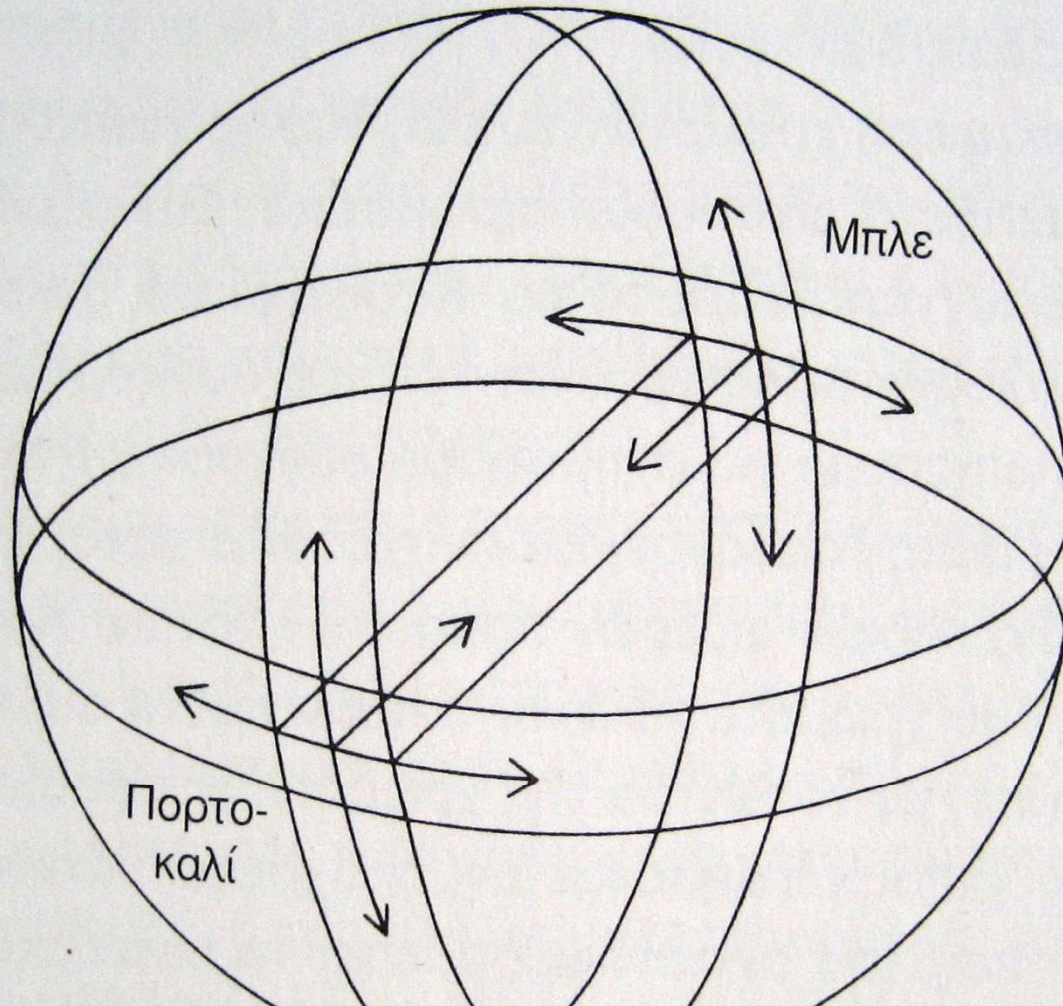
1888-1967

Θεωρία χρώματος



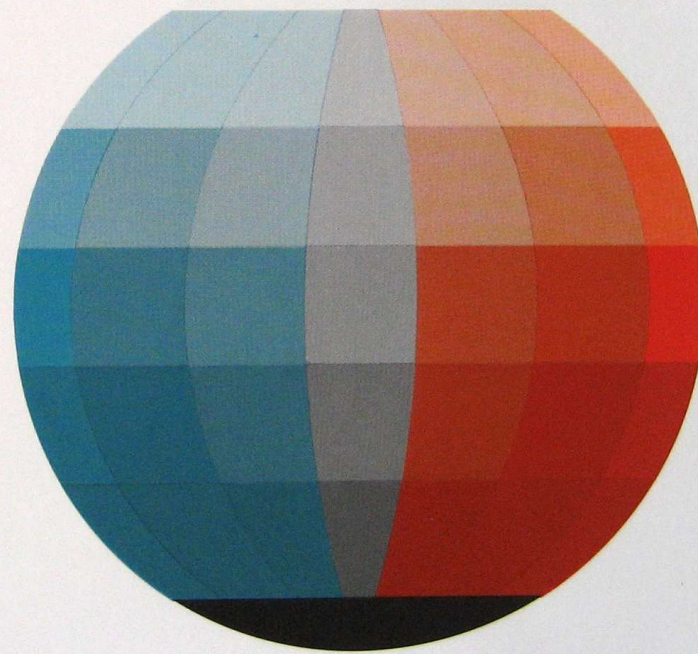
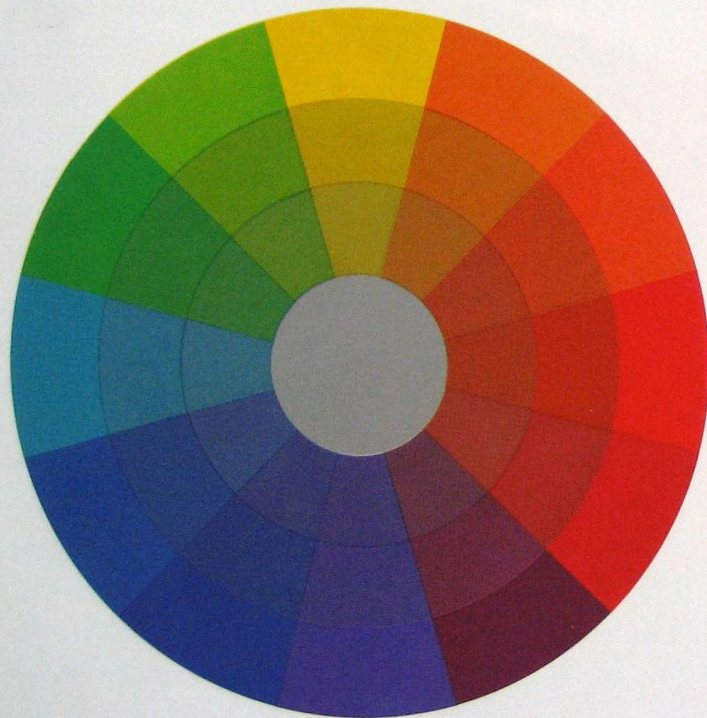
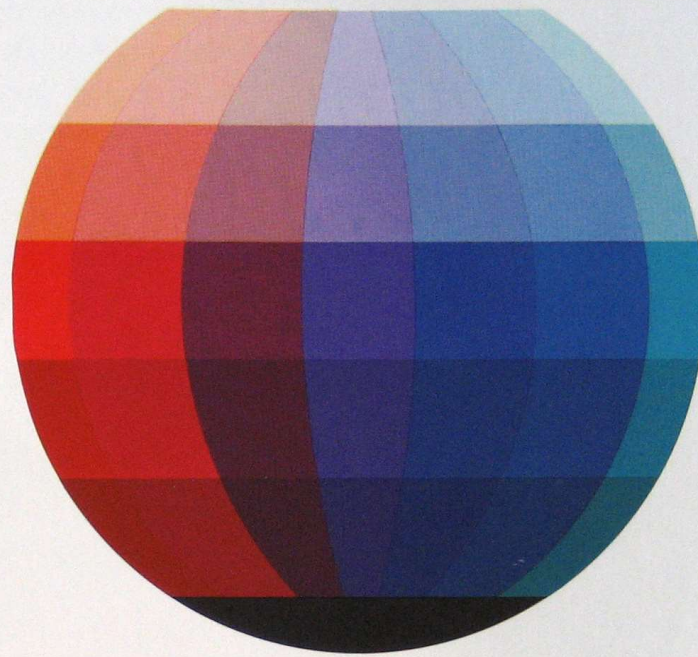
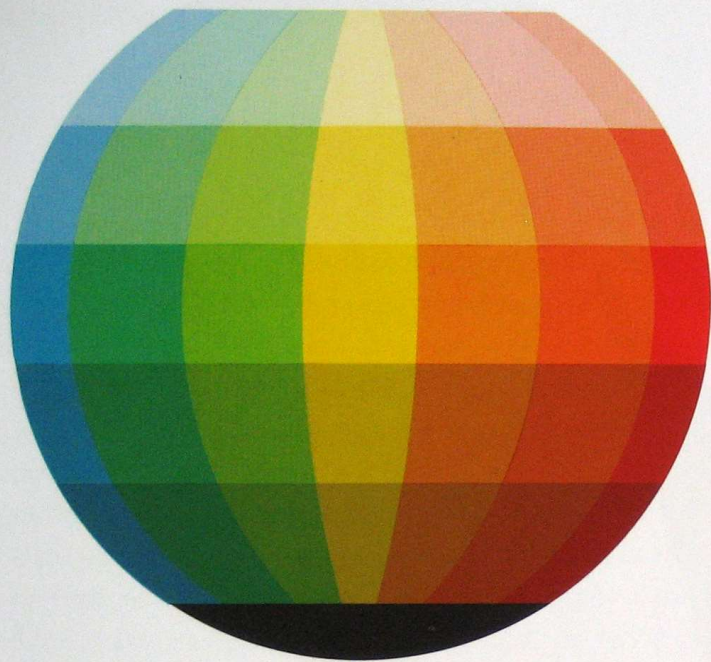


Άσπρο



Μπλε

Πορτο-
καλί



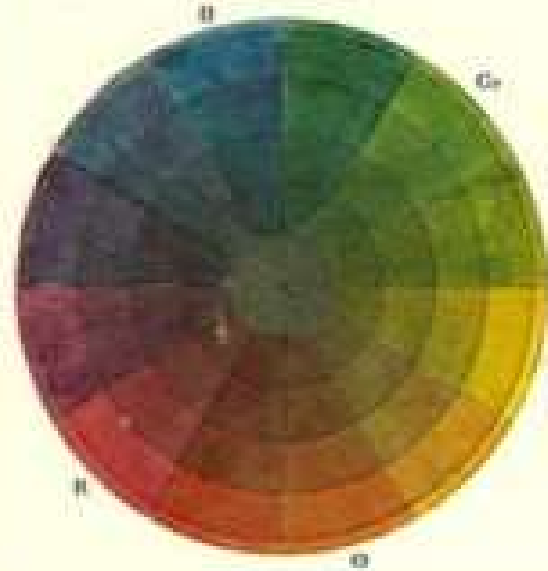
Farbenkugel.

Ansicht der inneren Seite.

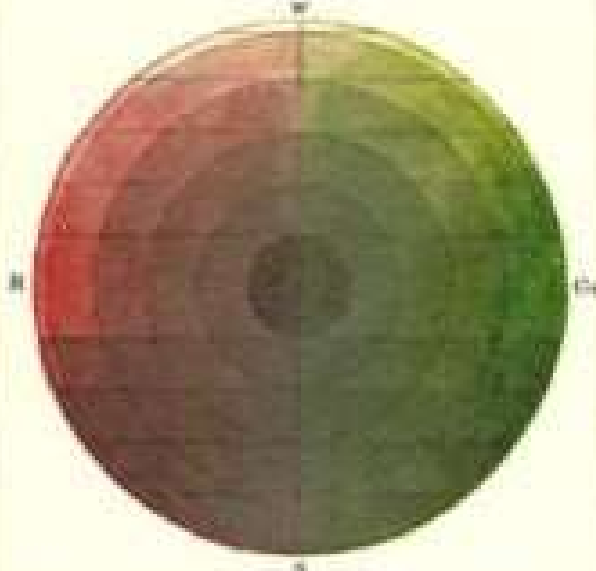
Ansicht der äußeren Seite.



*Charakter
nach der Lage.*



*Charakter
nach der Lage.*

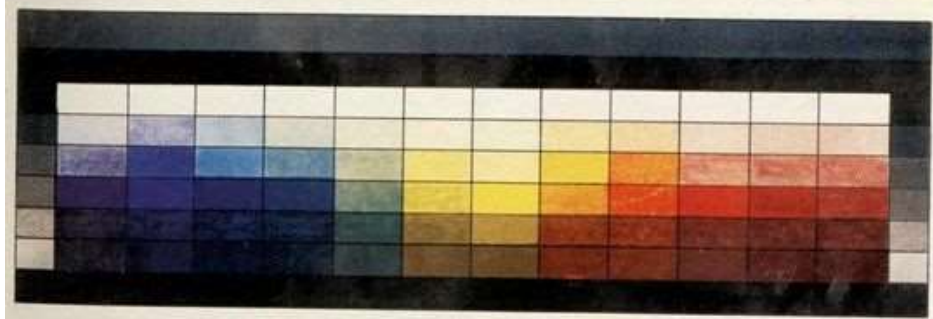
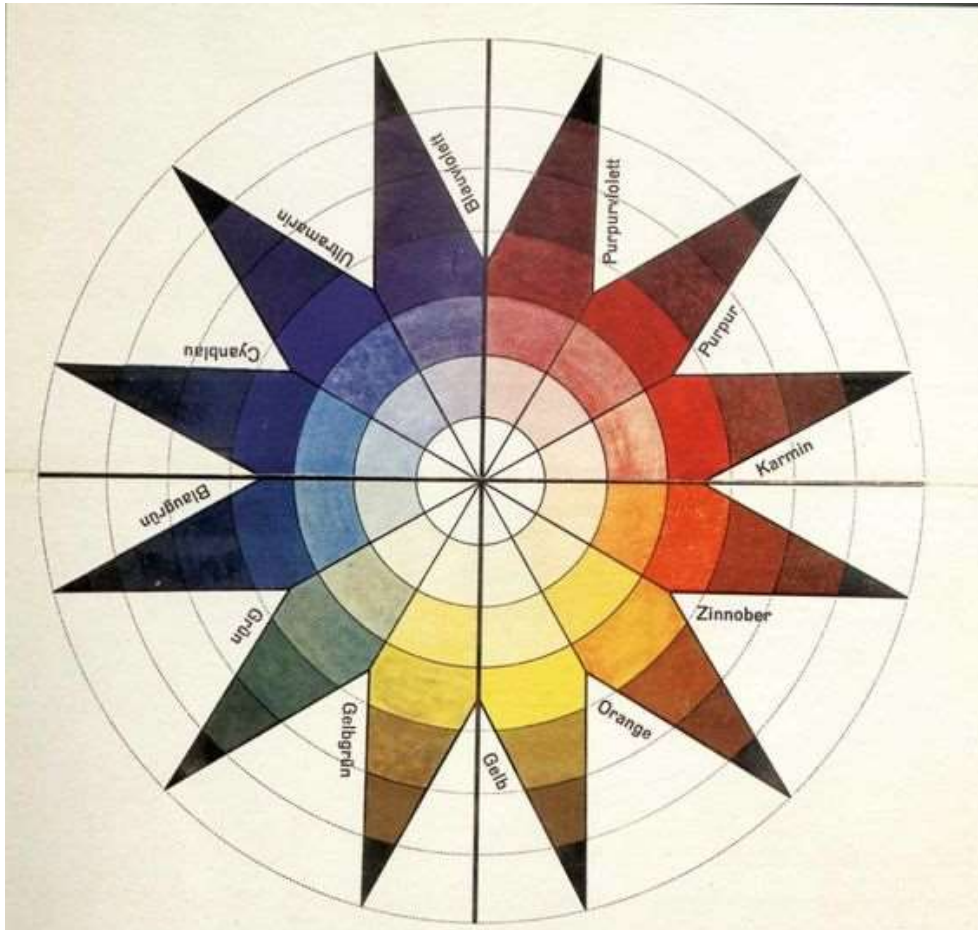






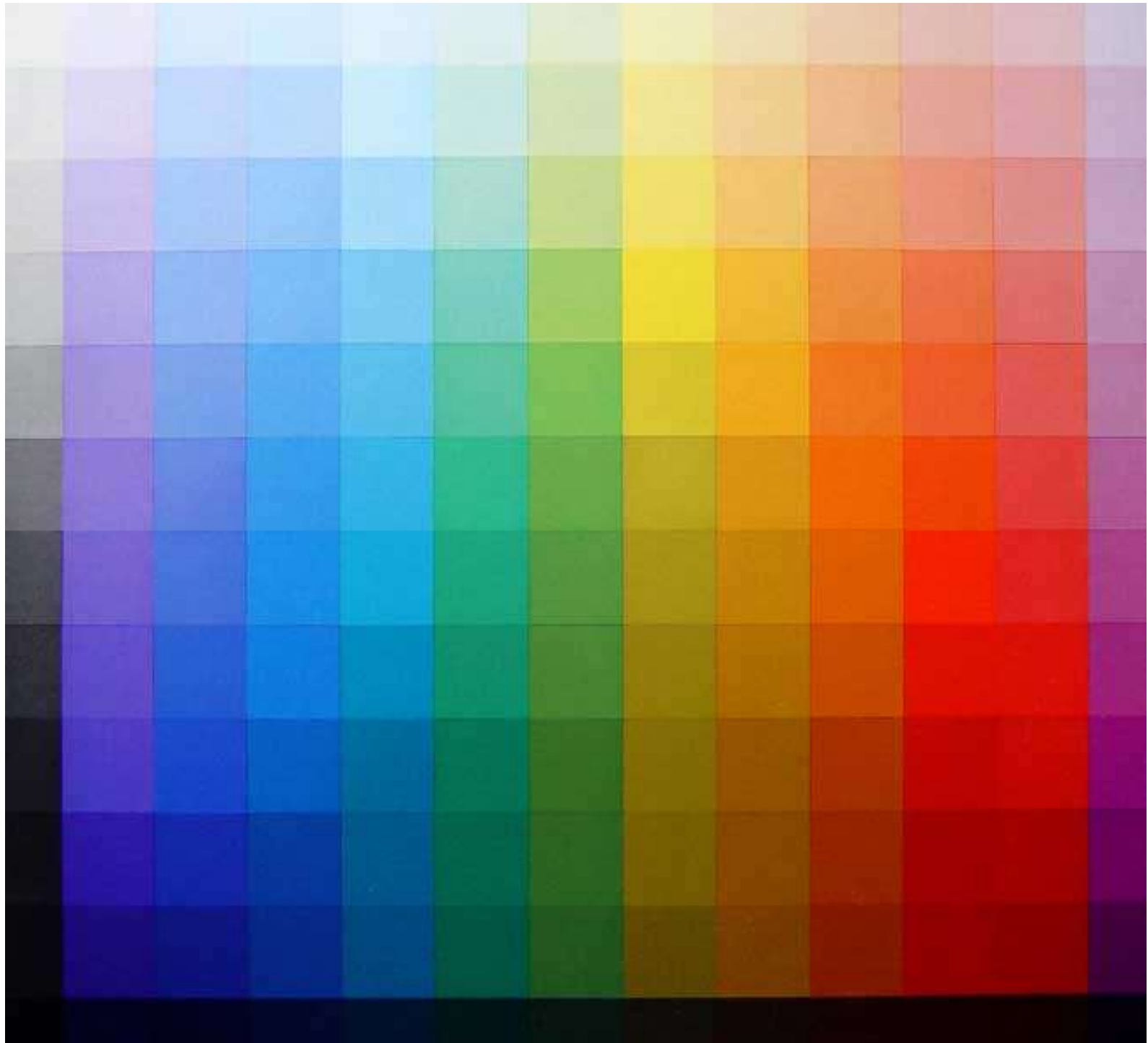


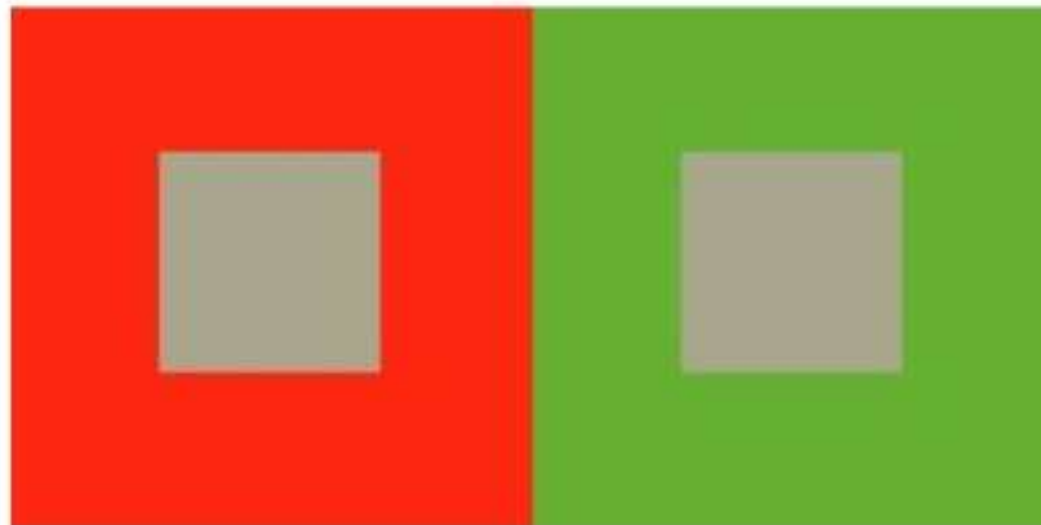
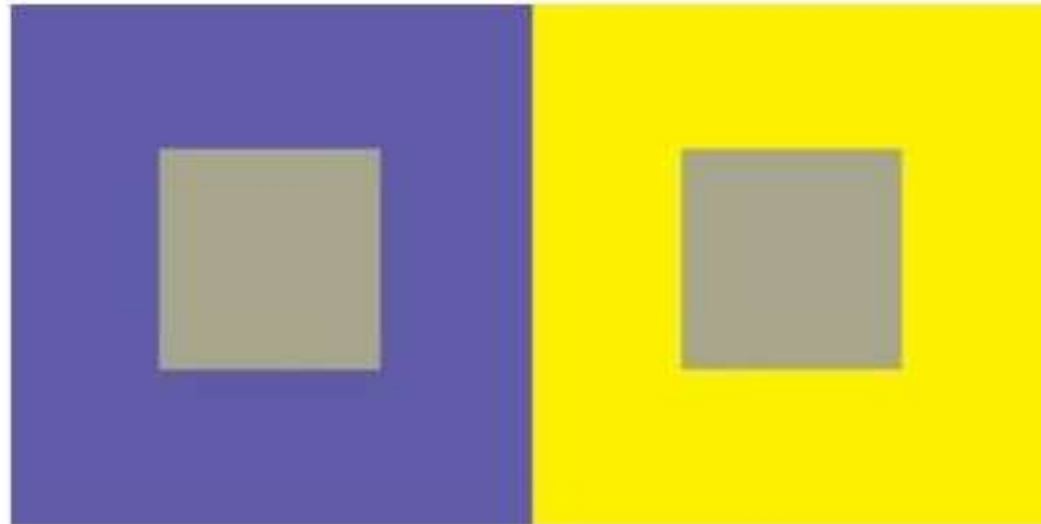




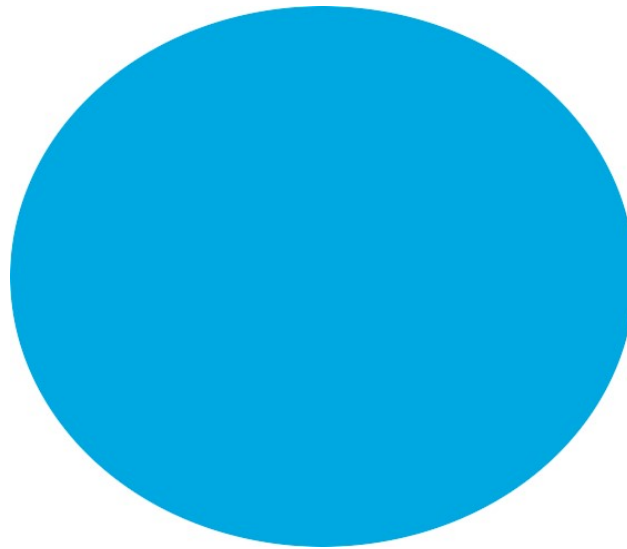
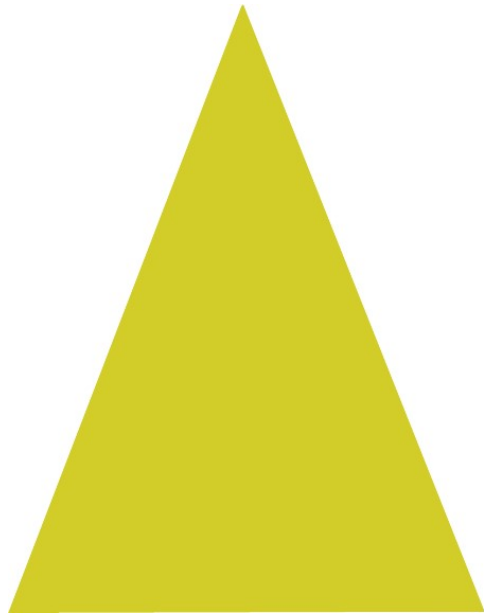
Farbenkugel

- 7 Lichtstufen - 12 Tönen
 von
 Johannes Itten





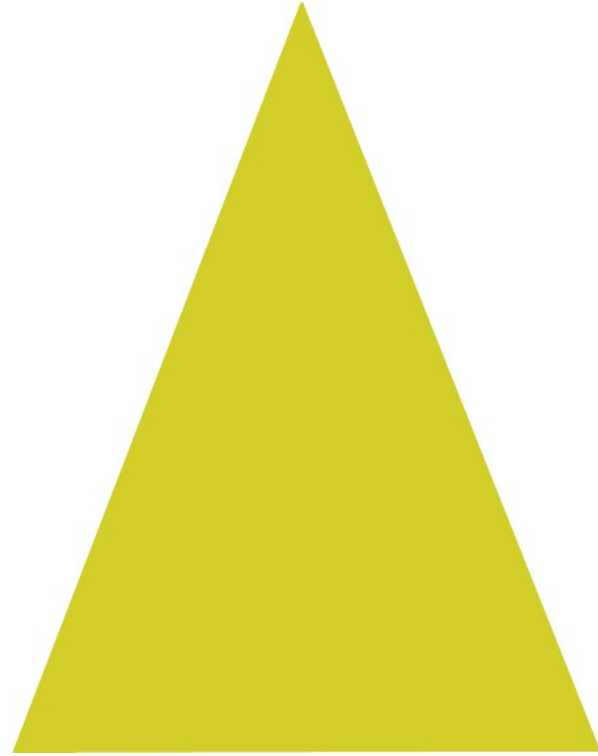
Τα σχήματα και τα χρώματα



Η ένταση του κίτρινου



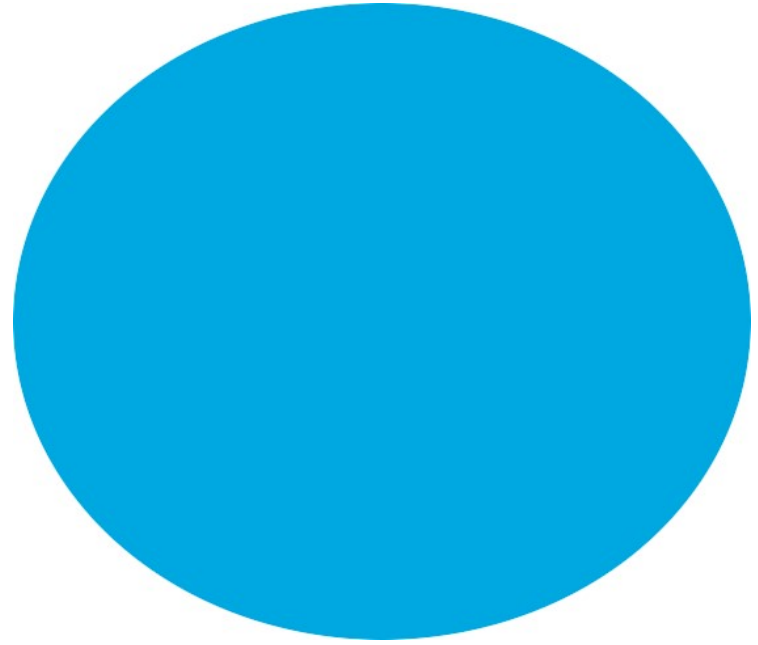
Witz, Konrad
Synagogue
86x80
Kunstmuseum Basel
1435



Η απεραντοσύνη του μπλε

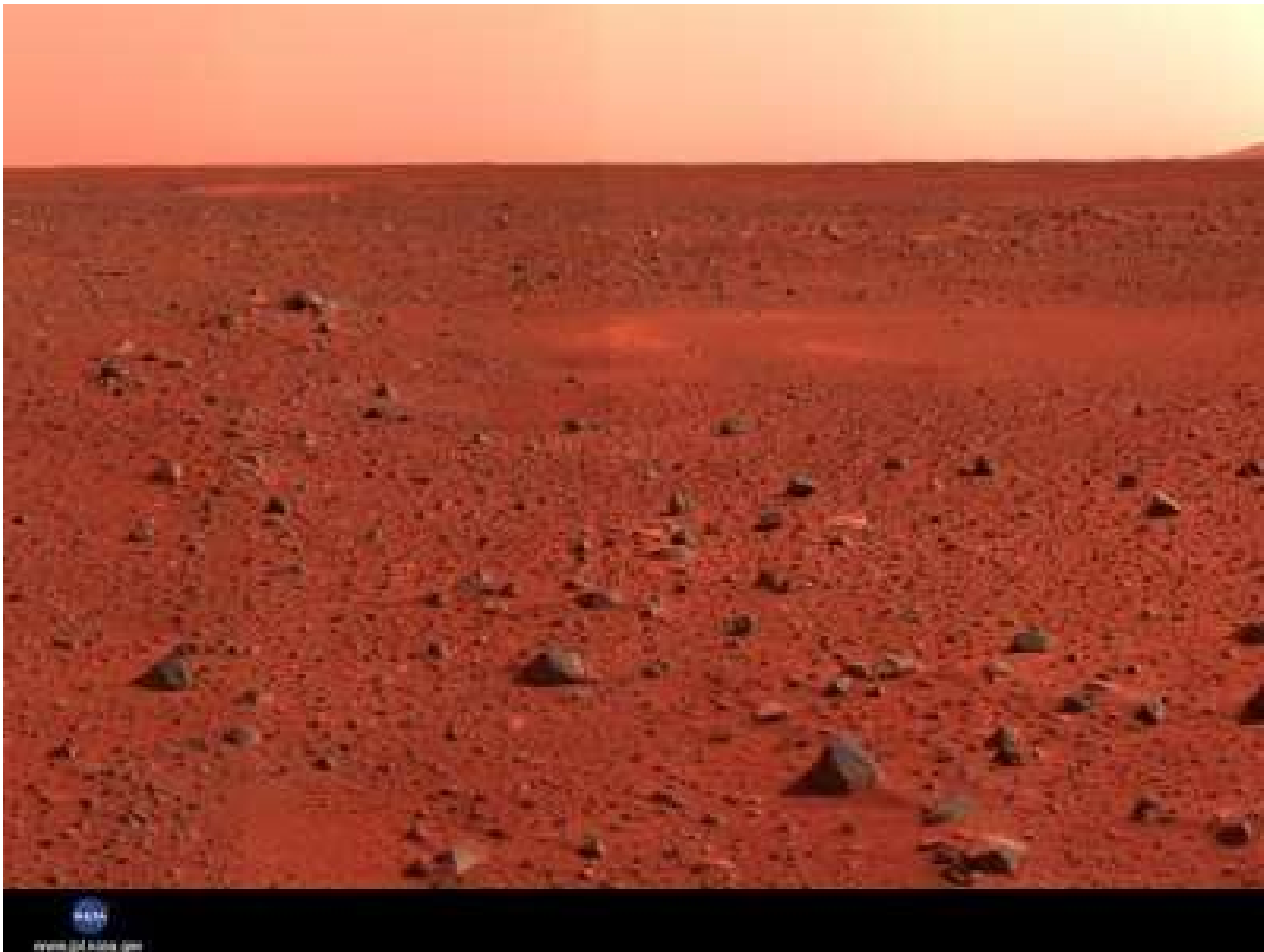


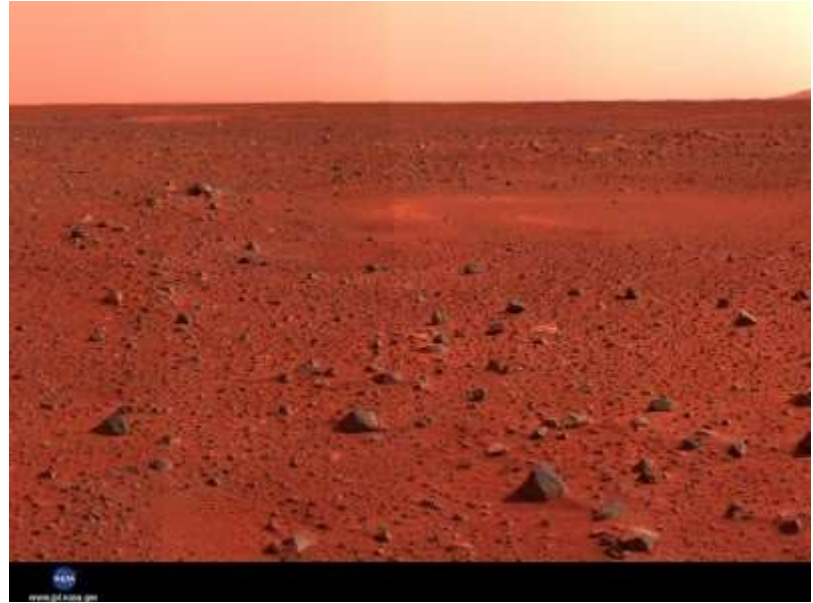
Peter Bruegel the Elder,
Η πτώση του Ίκαρου
63x90 εκ.
Royal Museum of Fine Arts, Βρυξέλες,
1558

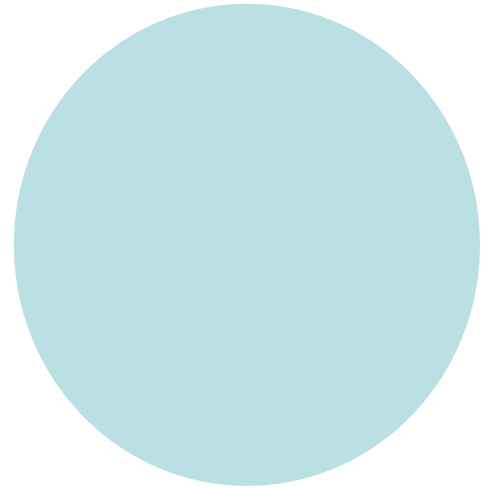
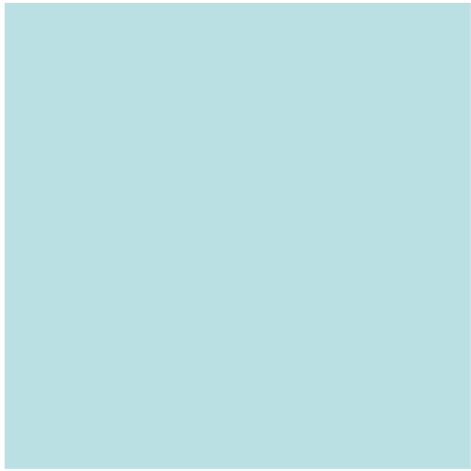
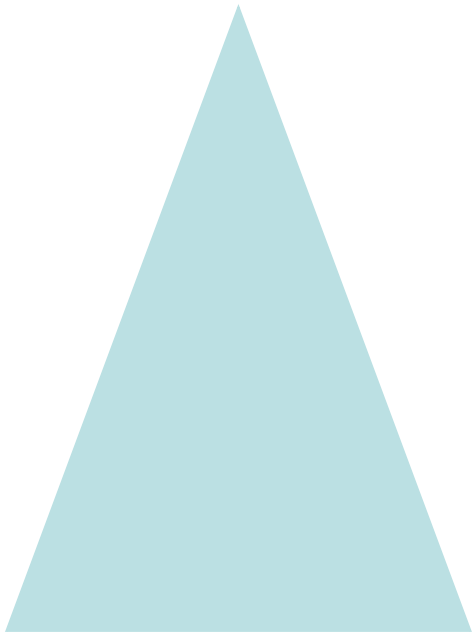










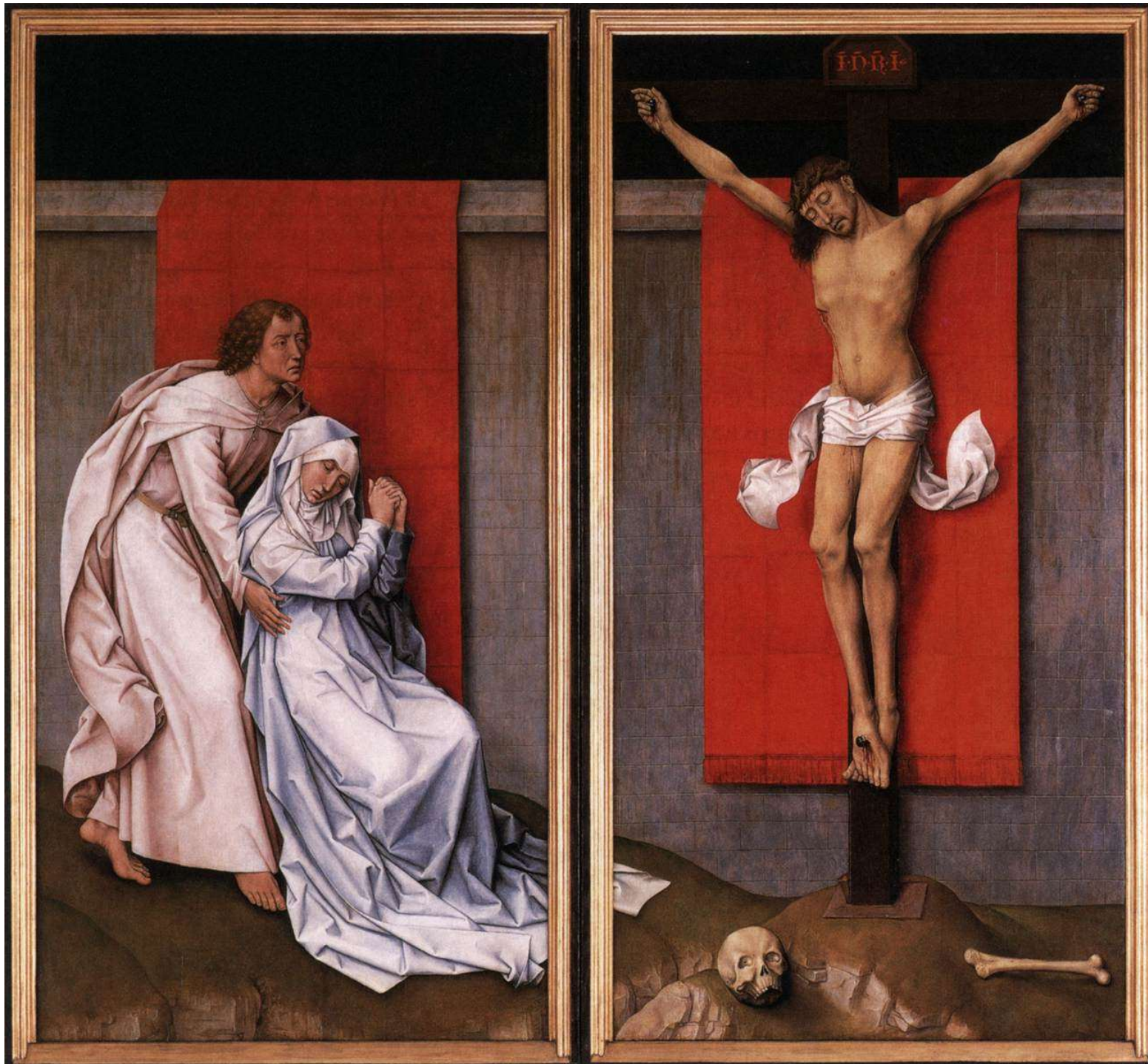


Η στατικότητα του κόκκινου

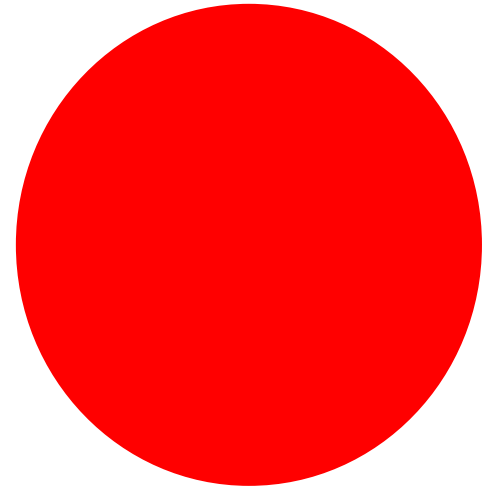
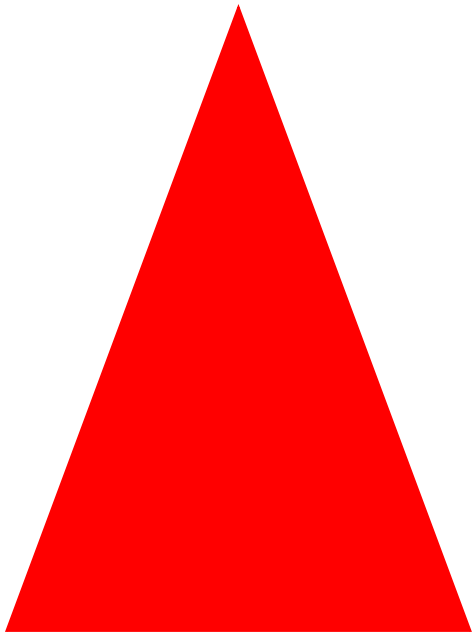


Witz, Konrad
Ecclesia
86x80
Kunstmuseum Basel
1435





Roger van der Weyden
Crucifixion Diptych
c. 1460
Oil on oak panel, 180 x 186
cm
Philadelphia Museum of
Art, Philadelphia



ΤΑ ΖΕΥΓΗ ΤΩΝ ΣΥΜΠΛΗΡΩΜΑΤΙΚΩΝ ΧΡΩΜΑΤΩΝ

- ΜΠΛΕ/ΠΟΡΤΟΚΑΛΙ
- ΚΟΚΚΙΝΟ/ΠΡΑΣΙΝΟ
- ΚΙΤΡΙΝΟ/ΜΩΒ

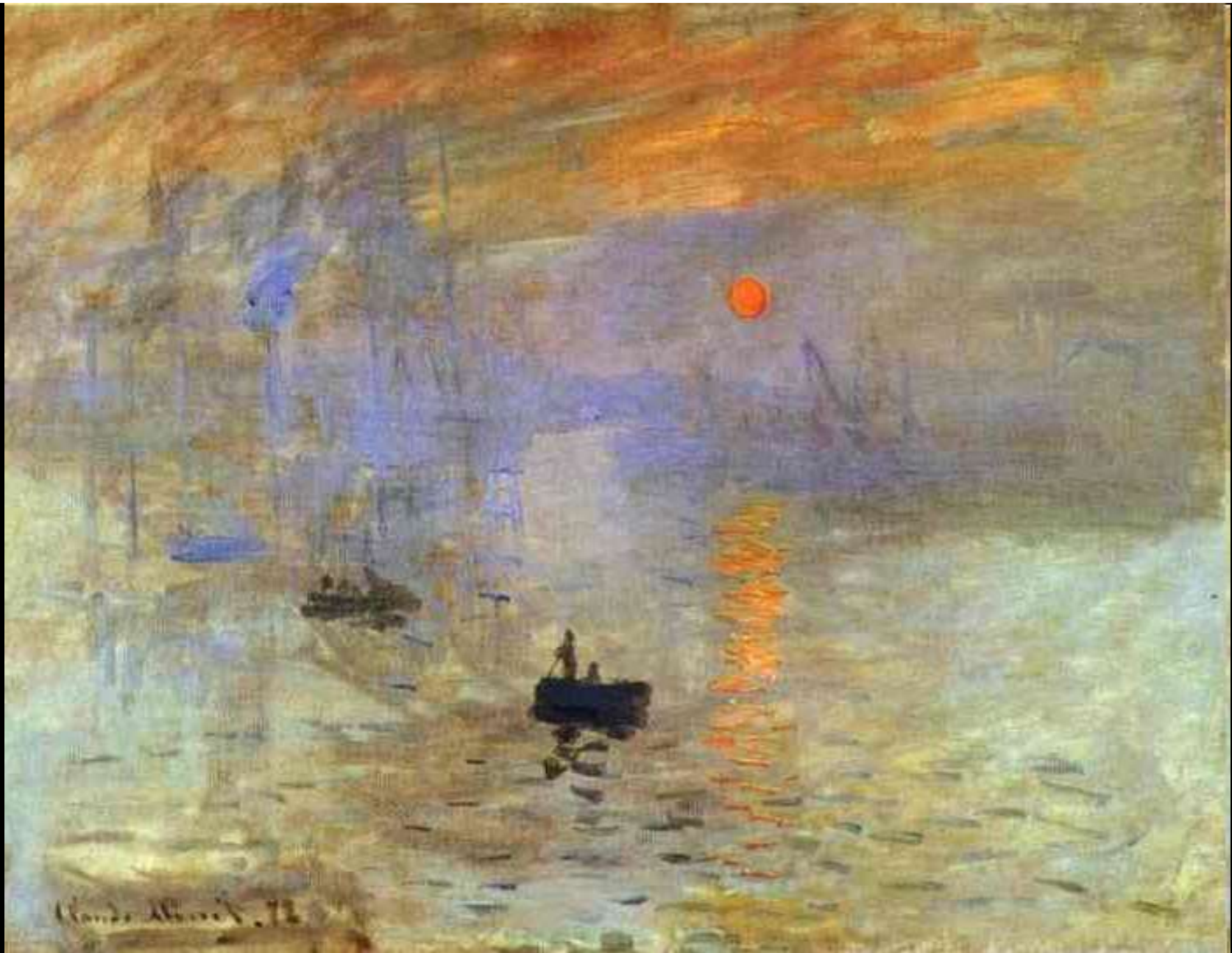
ΜΠΛΕ/ΠΟΡΤΟΚΑΛΙ

θερμό ψυχρό





Turner, **Landscape with a River and a Bay in the Background**, 1835-40, Oil on canvas, 93 x 123 cm, Musée du Louvre, Paris



Claude Monet. *Impression: Sunrise*. 1873. Oil on canvas. Musée Marmottan, Paris, France

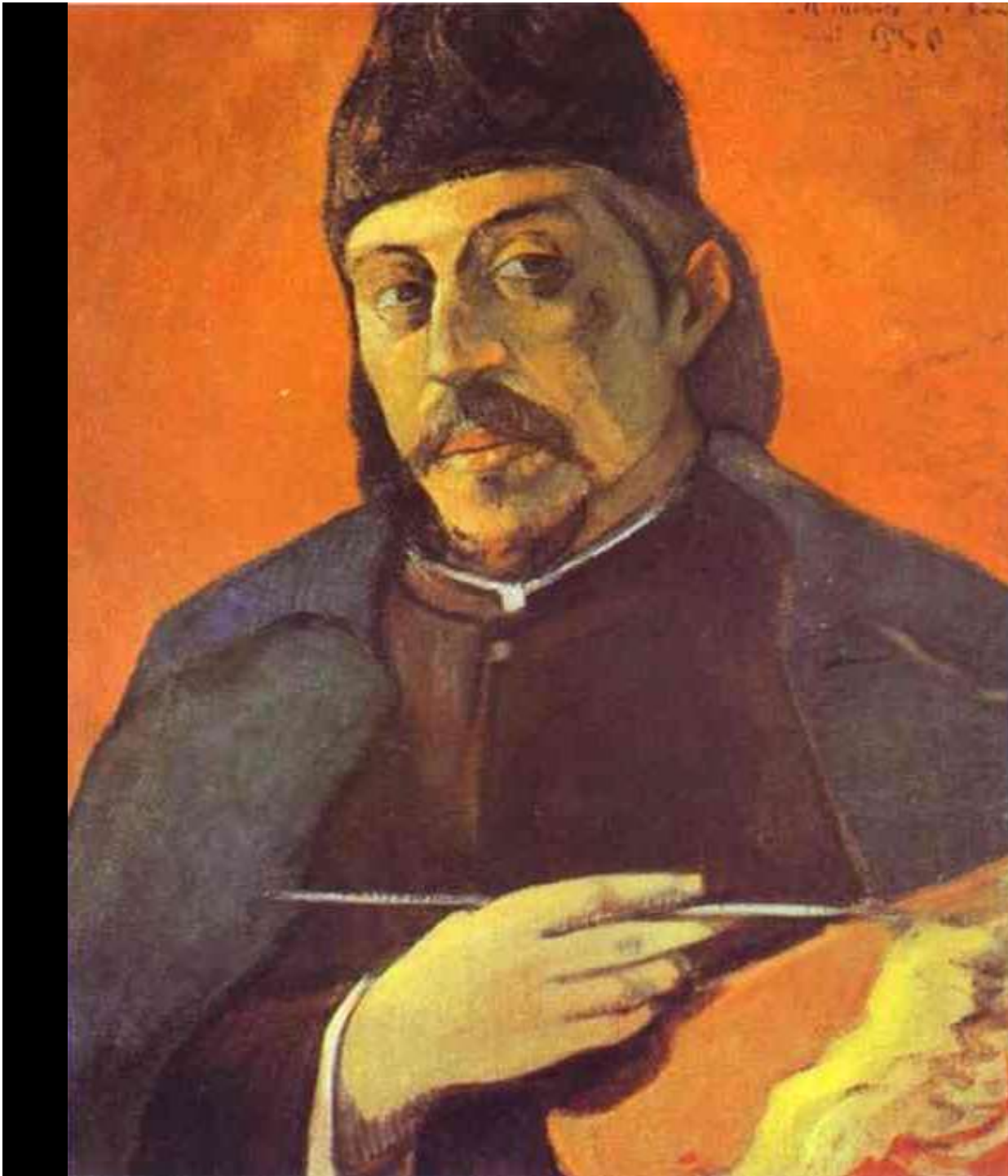


Claude Monet, Londres, le Parlement. *Trouée de soleil dans le brouillard*, 1904 huile sur toile 0.81x0.92 musée d' Orsay, Paris,



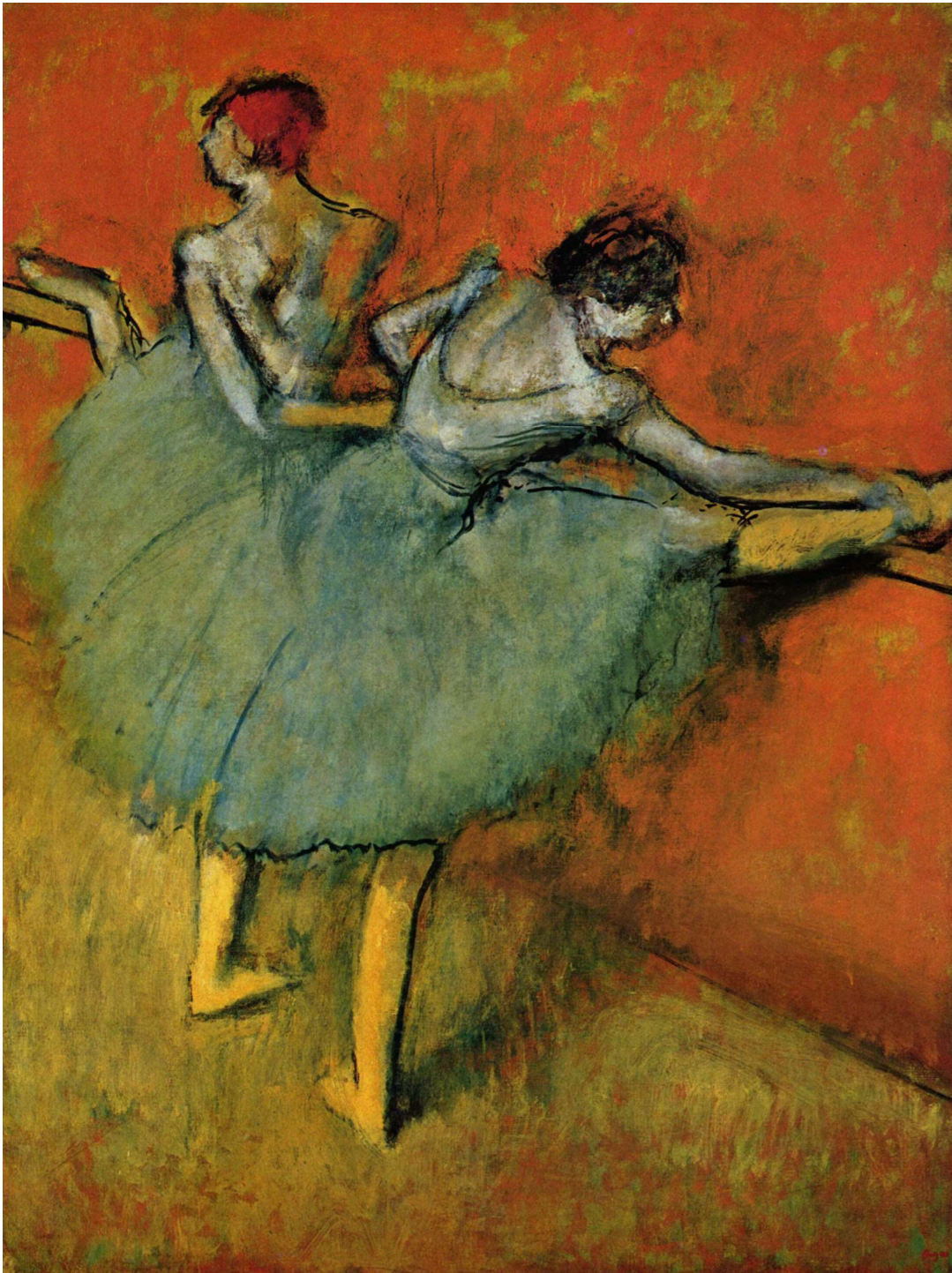
Claude Monet. *Dahlias*. 1883.
Oil on canvas. Private collection, New York, USA.





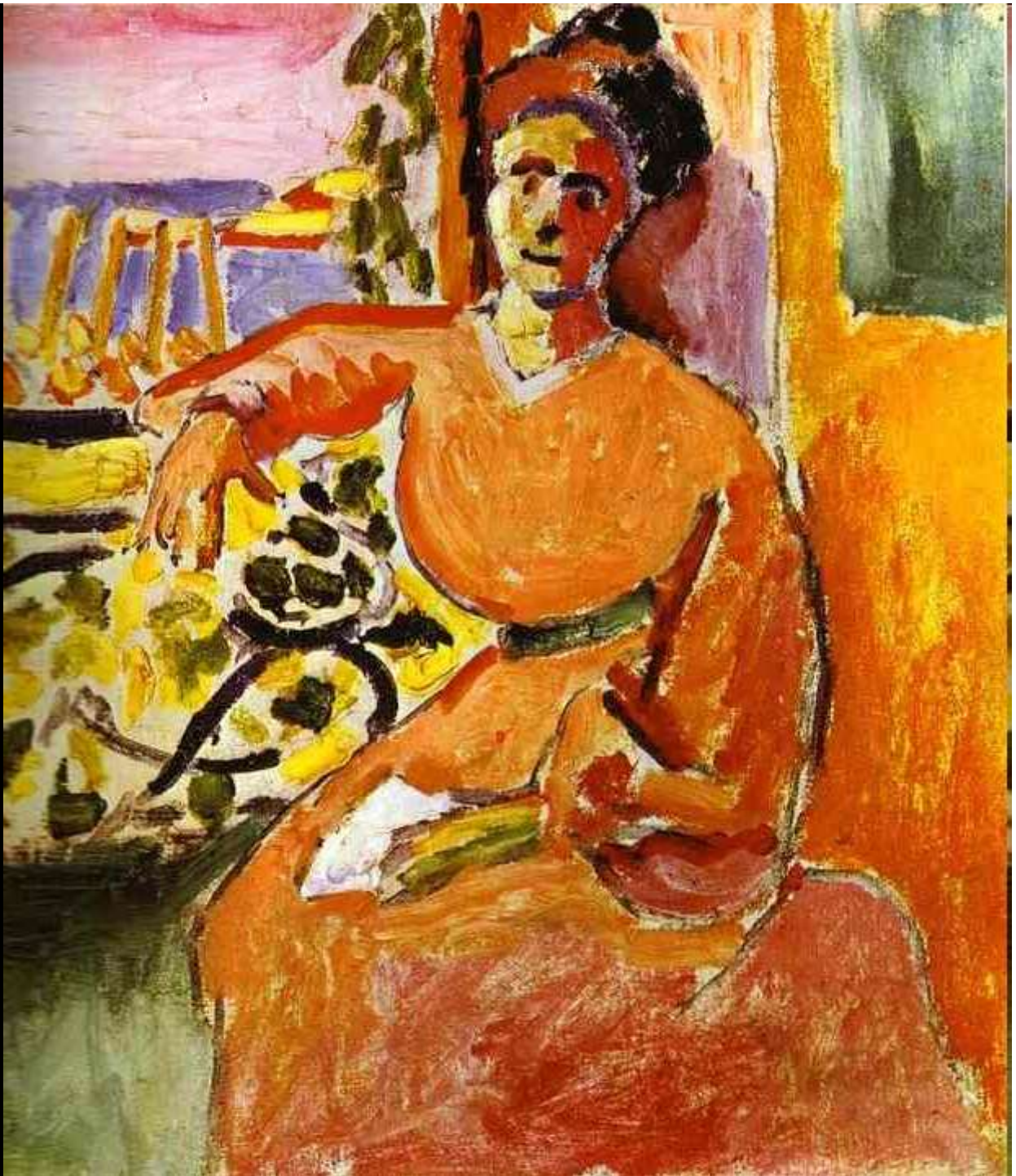
Paul Gauguin, Self-portrait. 1891.

Oil on canvas. Private collection.

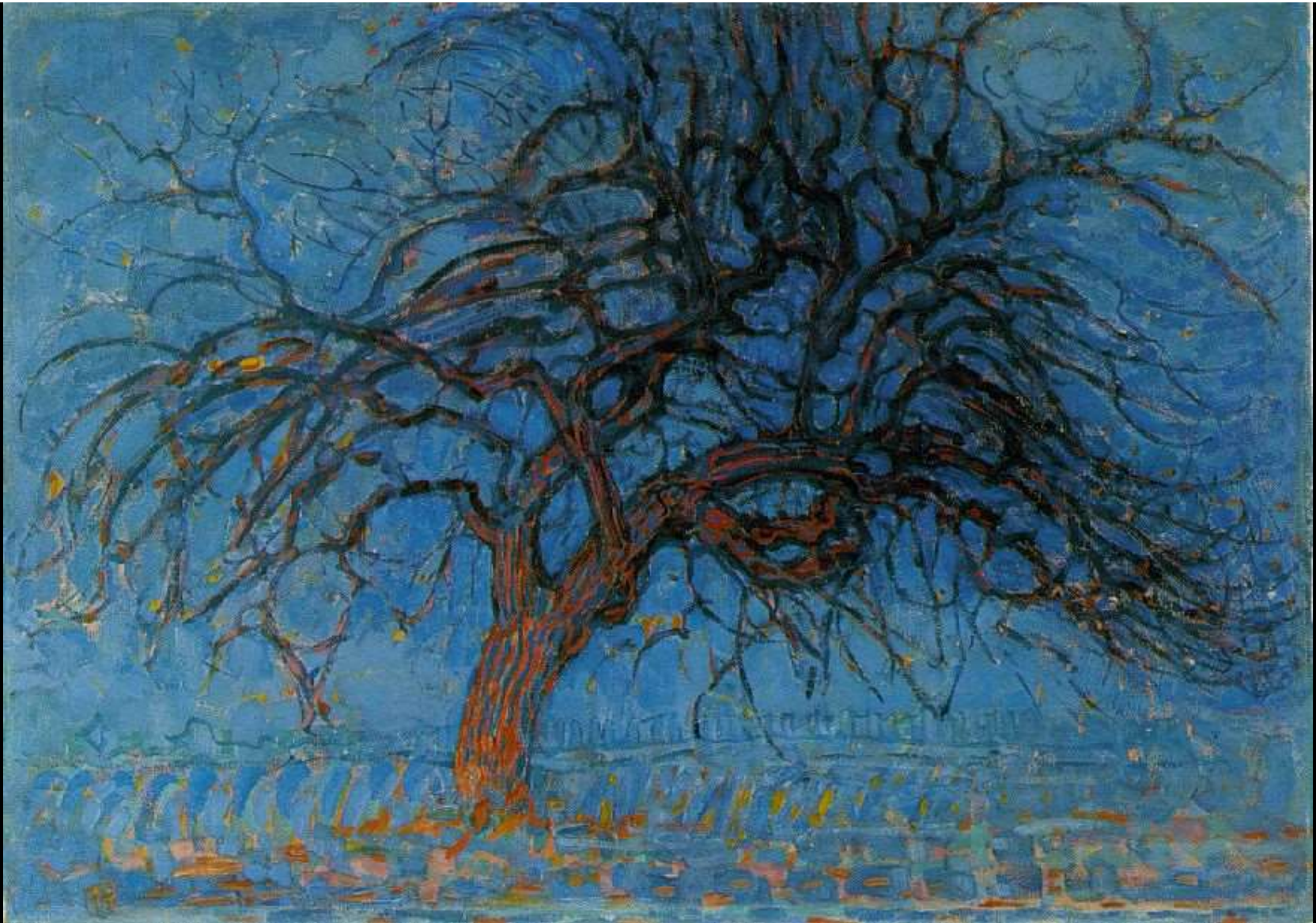


Edgar Degas, 1888.

130x97 εκ. Oil on canvas. Phillips Collection.



Matisse, A Woman Sitting before the Window. 1905.
Oil on canvas. Acquavella Galleries



Avond (Evening); Red Tree
1908
Oil on canvas
70 x 99 cm (27 1/2 x 39 in H)

aags Gemeentemuseum, The Hague

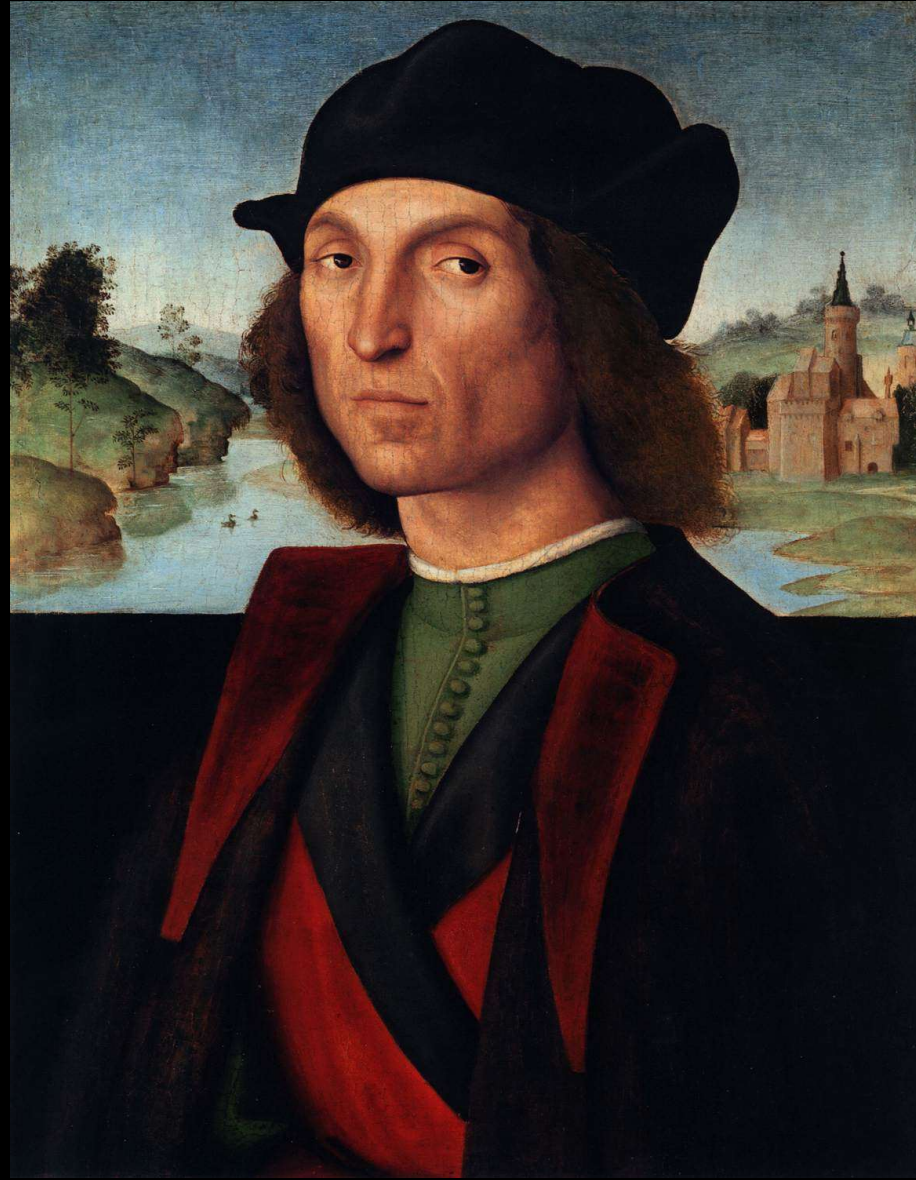


Turner, Dutch Boats in a Gale, 1801, Oil on canvas, 163 x 221 cm, National Gallery, London

ΚΟΚΚΙΝΟ/ΠΡΑΣΙΝΟ

Το ΦΥΣΙΚΟ/Η Στατική Ισοροπία





Rafaello, Portrait of a Man, 1502-04, Oil on panel, 48 x 37 cm, Liechtenstein Museum



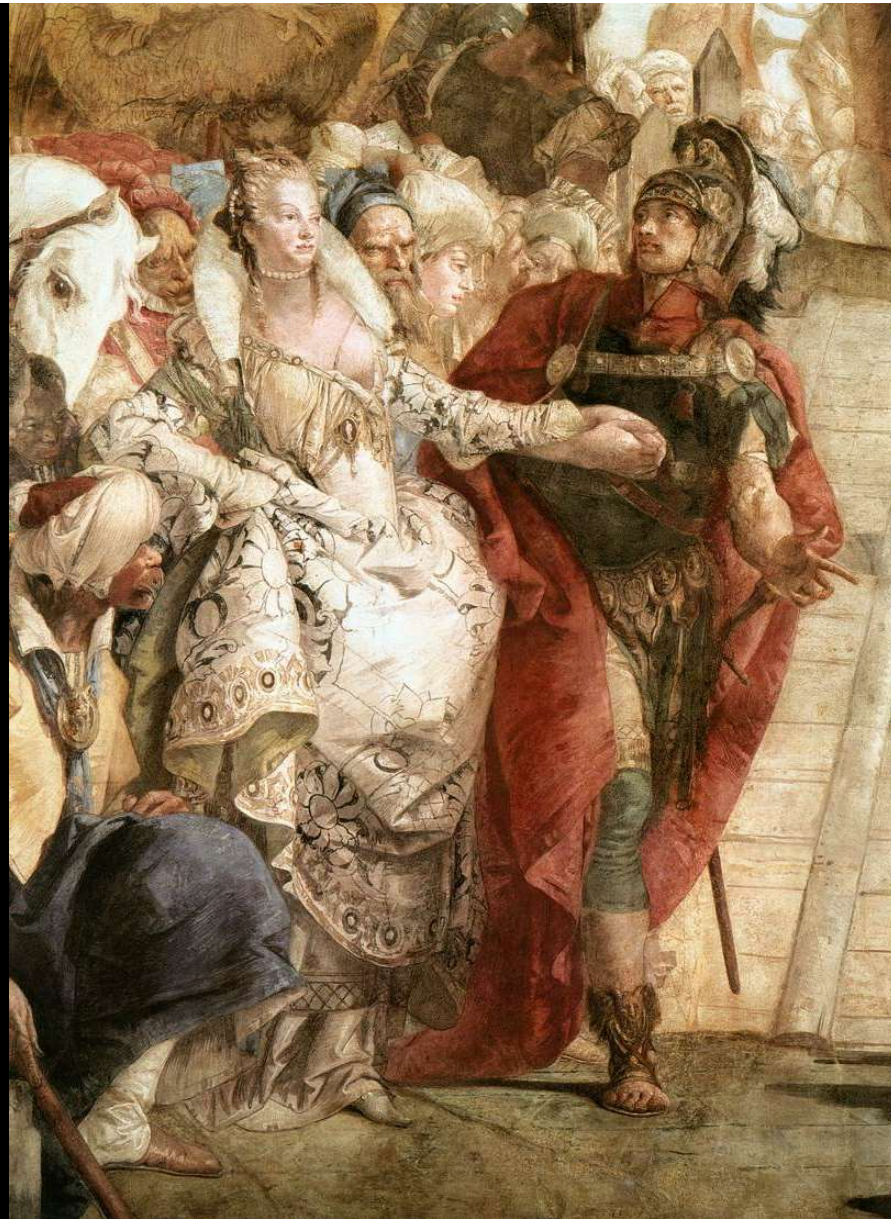
Raffaello, Lady with a Unicorn, c. 1505, Oil on wood, 65 x 51 cm, Galleria Borghese



Rafaello, Portrait of Pope Juliuw II, 1511-12, Oil on panel , 63 × 40 cm , National Gallery, London



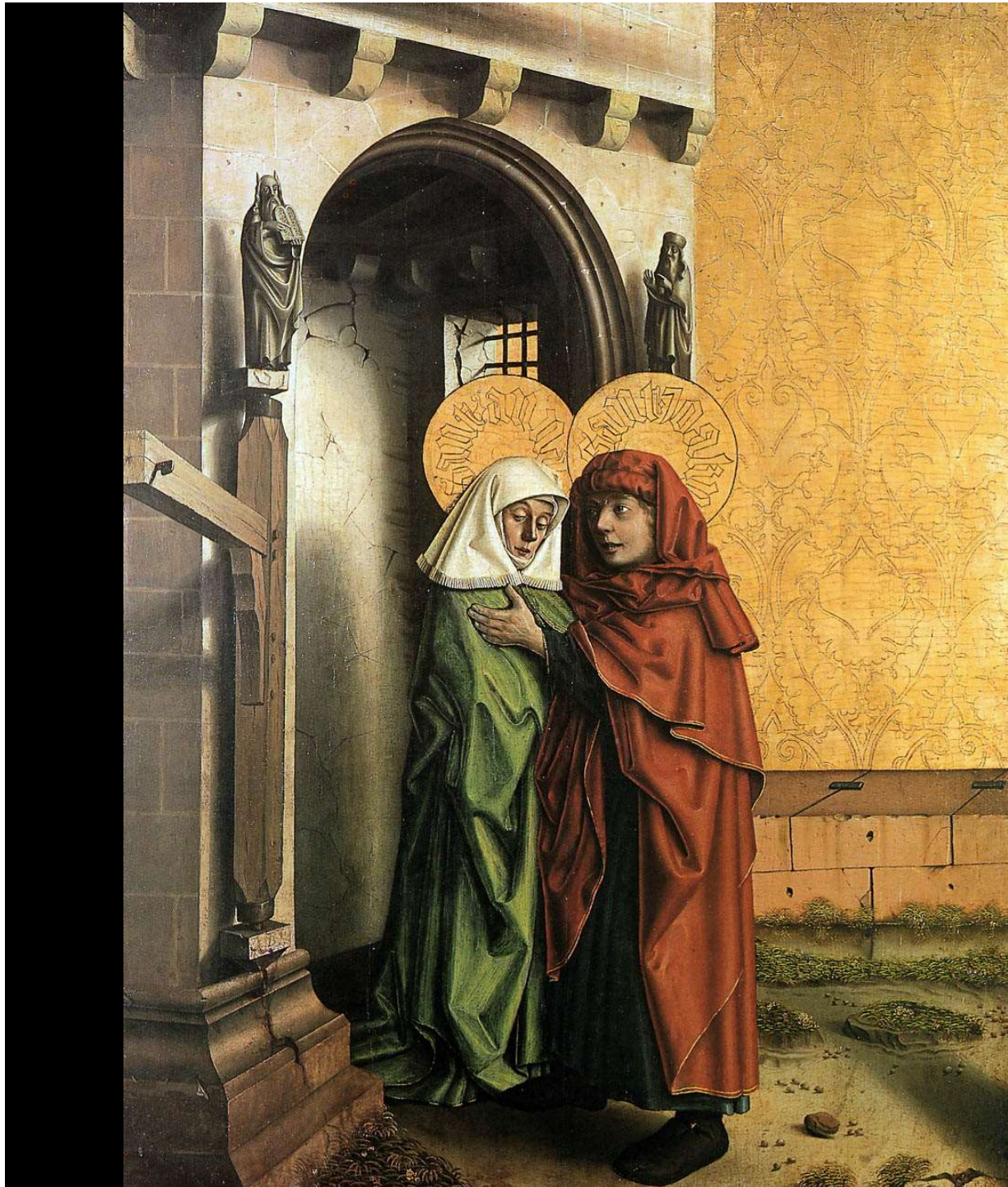
Ελ Γκρέκο, **Apostle St John the Evangelist**, 1610-14, Oil on canvas, 97 x 77 cm, Museo de El Greco, Toledo



Tiepolo, The Meeting of Anthony and Cleopatra (detail), 1746-47, Fresco, Palazzo Labia



Paul Cezanne, Flower Pots. 1888-1890.
Oil on canvas. Barnes Foundation, Philadelphia



Witz, Konrad
Ισαακ και Άννα
97x130cm
Kunstmuseum Basel
1445









Paul Cezanne, Boy in a Red Waistcoat.
c. 1888-1890. Oil on canvas.
Foundation E.G. Bührle collection



Θεοφάνης ο Κρης, 1546,
Egg tempera on wood, 54 x 39 cm,
Μοναστήρι Σταυρονικήτα, Άθως



Matisse, A Game of Bowls.
1908.
Oil on canvas. The
Hermitage



Matisse, La Musique. 1910. Oil on canvas. The Hermitage



The Red Studio, Henri Matisse Issy-les-Moulineaux, fall 1911. Oil on canvas, (181 x 219.1 cm), MOMA.

KITPINO/MQB

TO AΛΛOKOTO



The Blue Window. 1912. Oil on canvas.
The Museum of Modern Art



Matisse. *Still Life with 'La Danse'*. 1909. Oil on canvas. The Hermitage





Θεοφάνης ο Κρης, St Paul 1546, Wood, egg tempera,
61,5 x 50 cm, Stavronikita Monastery, Άθως



[James Abbot McNeill Whistler](#) *Night in Black and Gold, The falling Rocket* , 1874, oil on canvas, 60,5 × 47 cm



[James Abbot McNeill Whistler](#), Nocturne circa 1870-1877, oil on canvas 50.6 × 76.7 cm

Πολύπλοκες χρωματικές σχέσεις



Matisse, The Green Line,
40x32 cm,
oil on canvas, 1905,
Statens Museum for Kunst, Δανάη

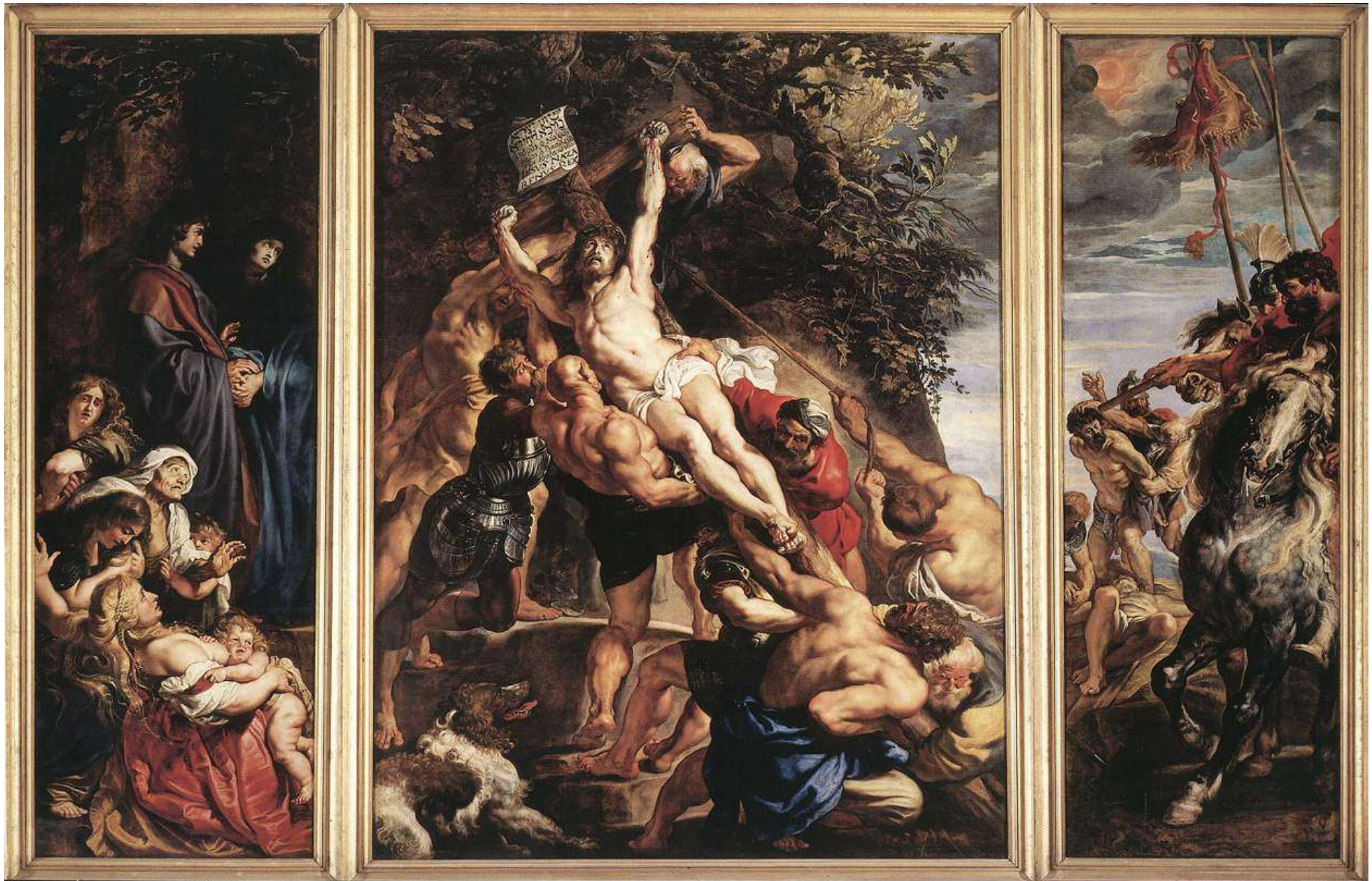
Roger van der Weyden
Deposition
c. 1435
Oil on oak panel, 220 x 262 cm
Museo del Prado, Madrid





El Greco
The Burial of the Count of Orgaz
1586-88
Oil on canvas, 480 x 360 cm

Santo Tomé, Toledo

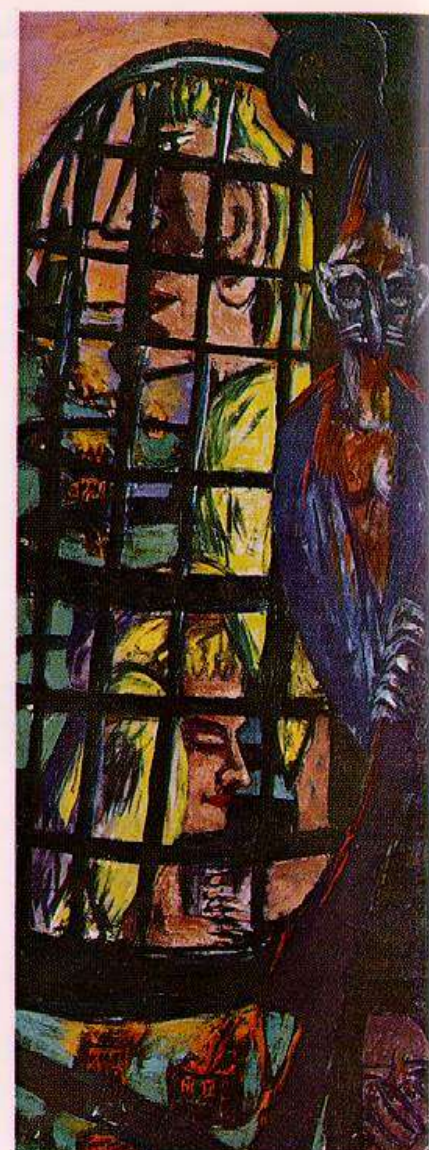


Rubens, Raising of the Cross

1610

Oil on panel, 460 x 340 cm (centre panel), 460 x 150 cm (wings)

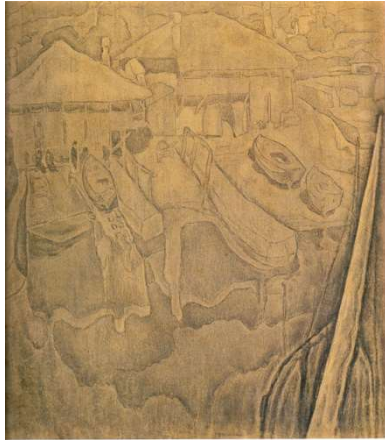
O.-L. Vrouwekathedraal, Antwerp



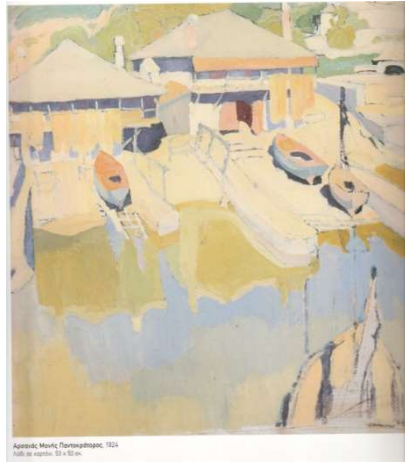
Max Beckmann
Perseus
Oil on canvas 1941
Folkwang Museum, Essen

ΘΕΡΜΑ/ΨΥΧΡΑ

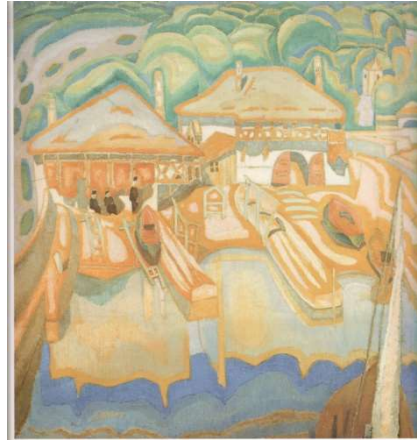
Το Παράδειγμα Παπαλουκά



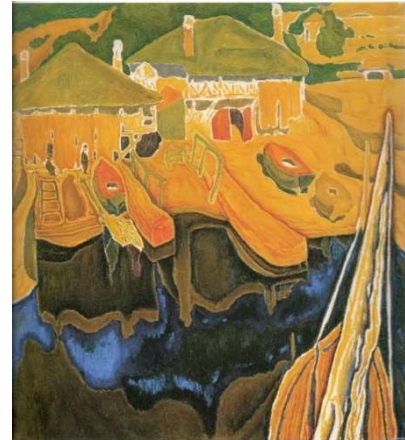
Απόστολ Μονής Παναγιάθωπος, 1924
Πλάσι με γαλβάνι σε ερυθρί, 82 x 79 εκ.



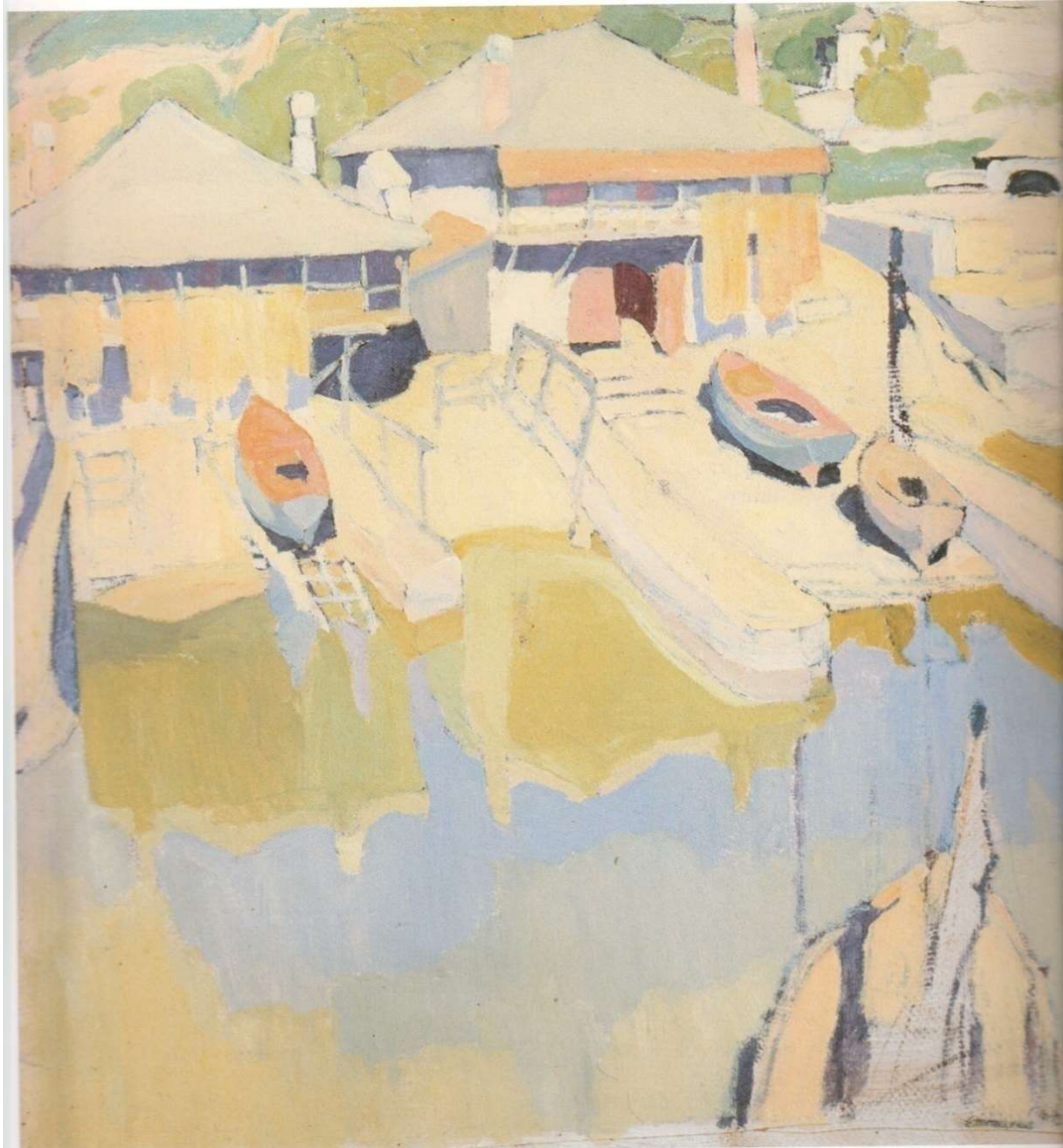
Απόστολ Μονής Παναγιάθωπος, 1924
Πλάσι σε ερυθρί, 53 x 52 εκ.



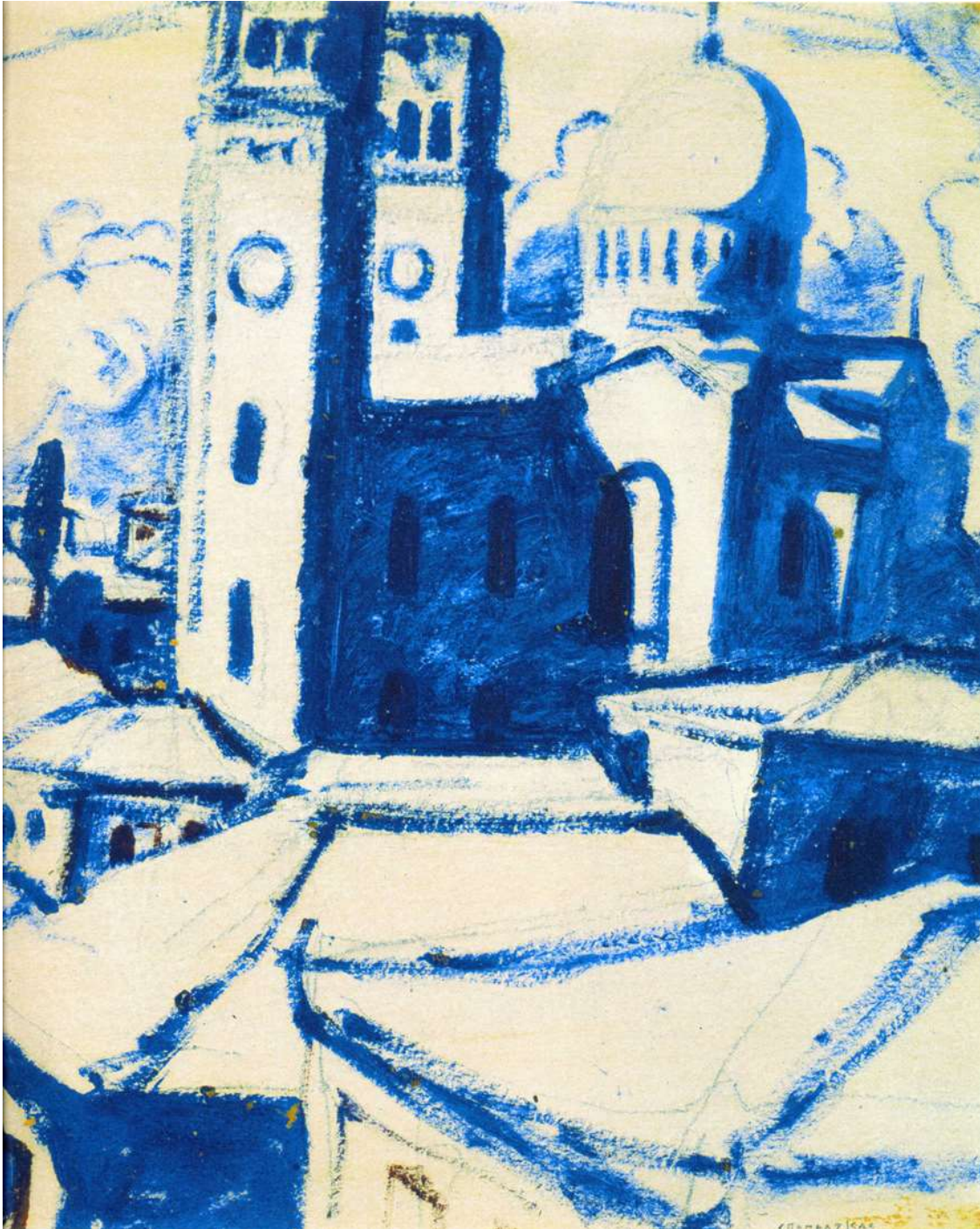
Απόστολ Μονής Παναγιάθωπος, 1924
Πλάσι σε γαλβάνι, 85,5 x 79 εκ.



Απόστολ Μονής Παναγιάθωπος, 1925
Πλάσι σε ερυθρί, 81 x 79 εκ.



Αρσανάς Μονής Παντοκράτορος, 1924
Λάδι σε χαρτόνι, 53 x 50 εκ.



Εκκλησία, 1923,
λάδι σε χαρτόνι, 24x20 εκ.



Μονή Αγίου Παύλου, 1923-24, λάδι σε χαρτόνι, 32x28εκ.

Ωράριον Αντίγραφα από Άγιο Όρος,
1924, λάδι σε χαρτόνι



Ευαγγελισμός, 1941, τέμπρα,
29,5x22 εκ.

ΤΑ ΕΞΟΥΔΕΤΕΡΩΜΕΝΑ





Ευγένιος Ντελακρουά, Battle of Taillebourg, (προσχέδιο) λάδι σε μουσαμά, 53x67 εκ., 1837







Ευγένιος Ντελακρουά, Battle of Taillebourg, λάδι σε μουσαμά, 485x555 εκ., 1837





**Το μπλέ,
το κόκκινο,
το κίτρινο
και το μαύρο:
οι περιπτώσεις Καραβάτζιο,
Ρέμπραντ
και Σπυρόπουλου**



Ρέμπραντ βαν Ράιν,
Susanna and the Elders
1647

Oil on mahogany panel, 77 x 93 cm



Carravagio
Adoration of the Shepherds
1609
Oil on canvas, 314 x 211 cm
Museo Regionale, Messina



Ρέμπραντ βαν Ράιν, *The Blinding of Samson*,
1636 , Oil on canvas, 206 x 276 cm; Stadelches Kunstinstitut, Frankfurt



Ρέμπραντ βαν Ράιν, Philosopher in Meditation
1632 , Oil on wood, 28 x 34 cm (11 x 13 1/2"); Musee du Louvre, Paris



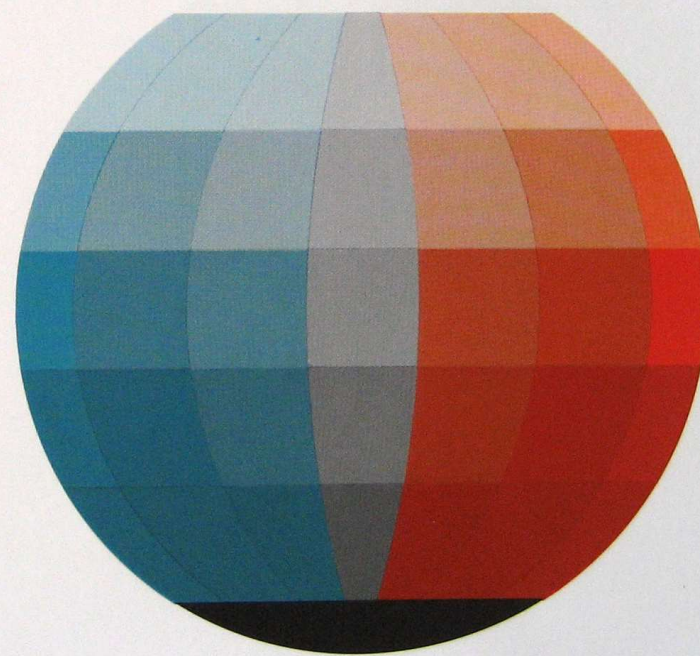
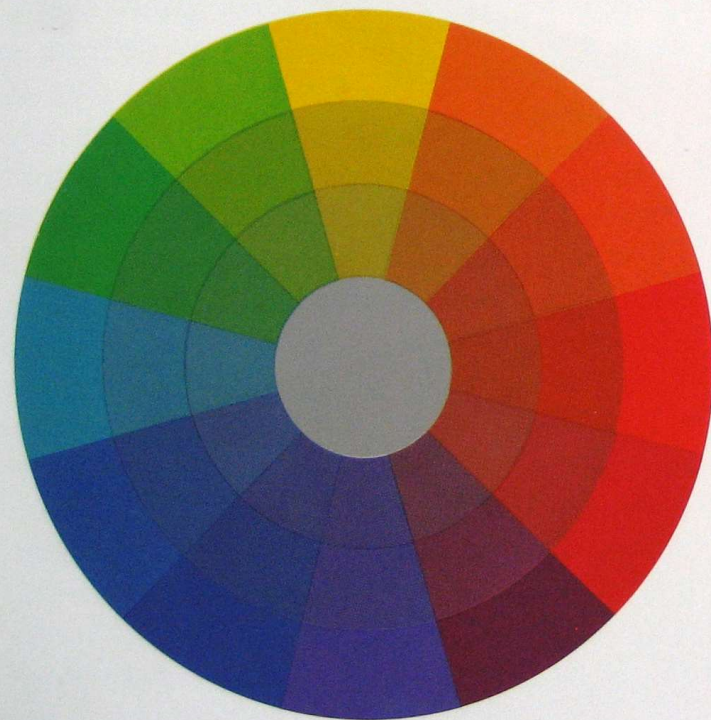
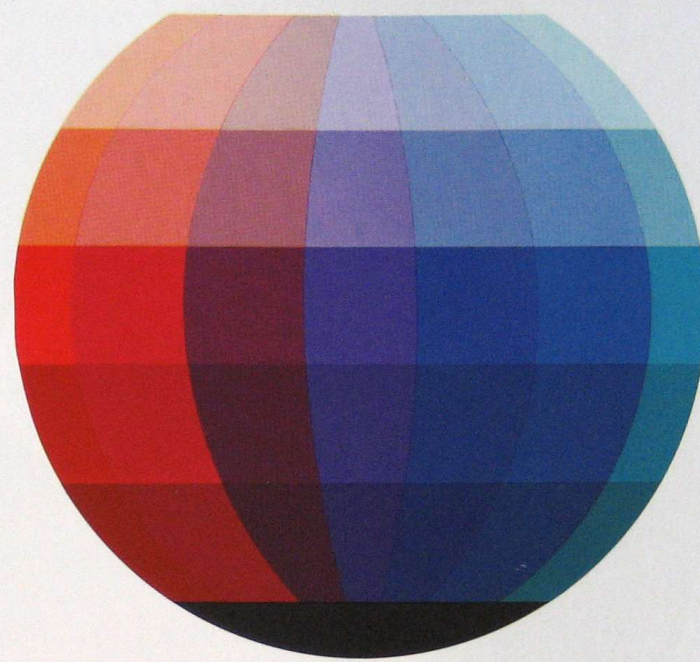
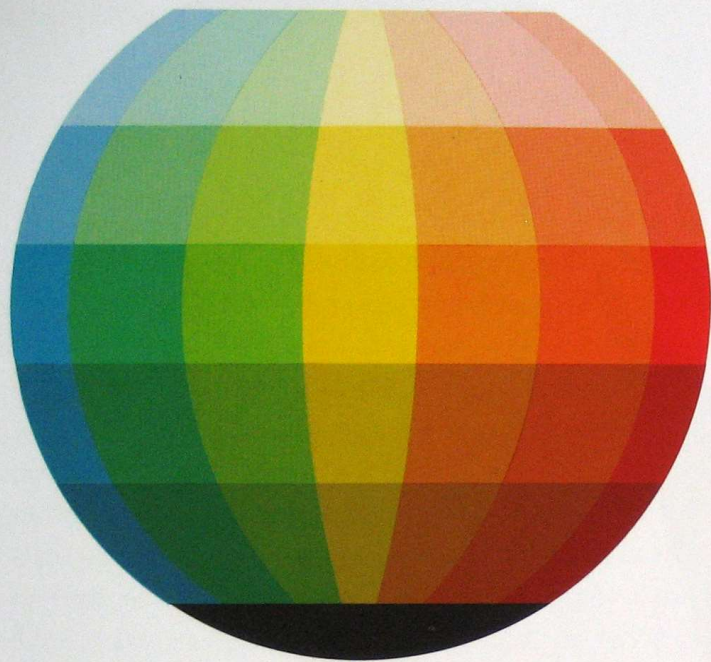
Καραβάτζιο,
Nativity with St Francis and St Lawrence
1609
Oil on canvas, 268 x 197 cm
Formerly in Oratorio di San Lorenzo, Palermo



Γιάννης Σπυρόπουλος, *Τρίπτυχο Ε'*, 1969
Μικτή τεχνική σε μουσαμά, 162 x 270 εκ.. Εθνική Πινακοθήκη



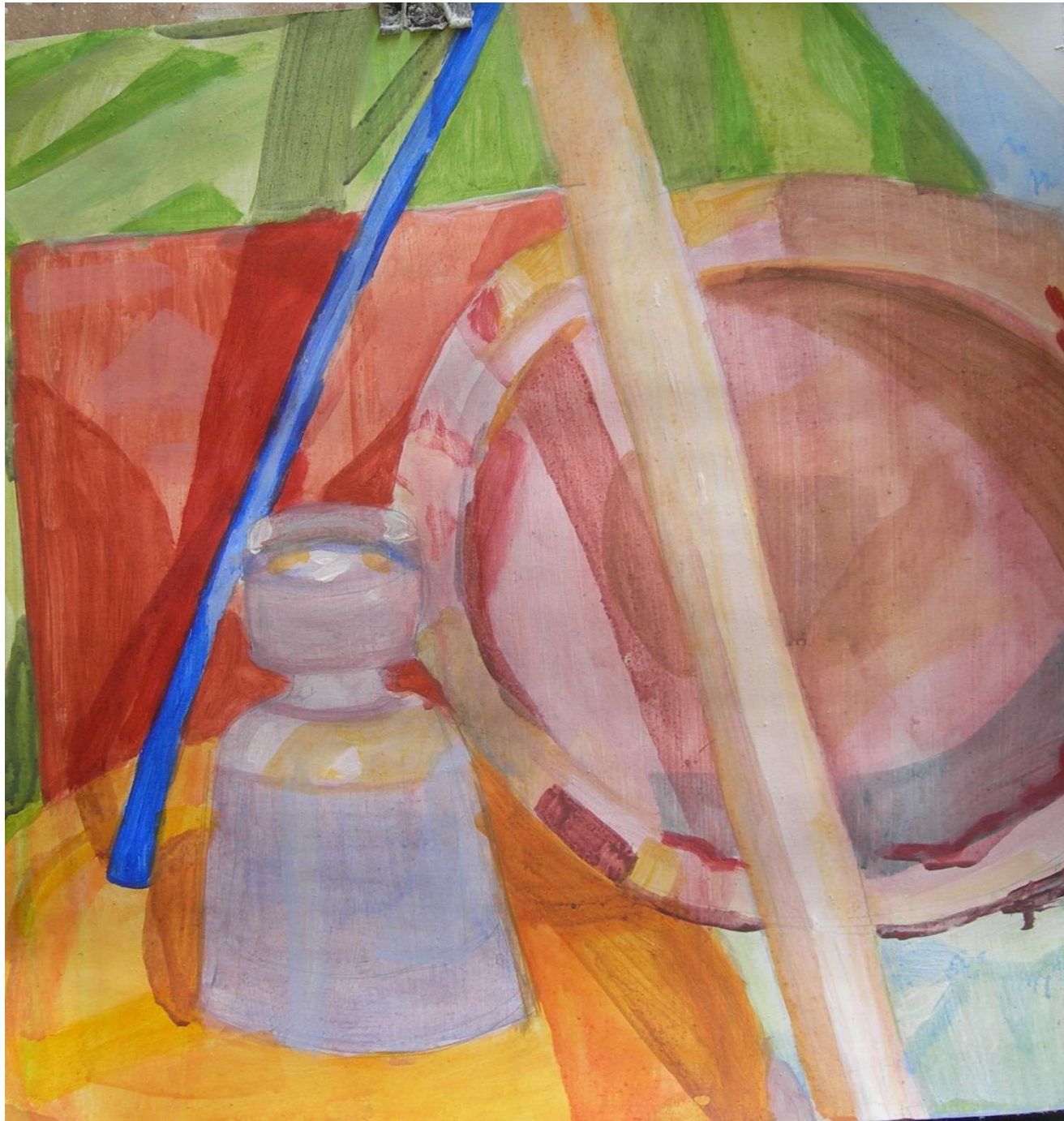
Γιάννης Σπυρόπουλος,
Ωρα L, 1968
Μικτή τεχνική σε μουσαμά ,
112x 144 εκ.. Εθνική Πινακοθήκη



Η επάλληλη τοποθέτηση , τα διαδοχικά στάδια







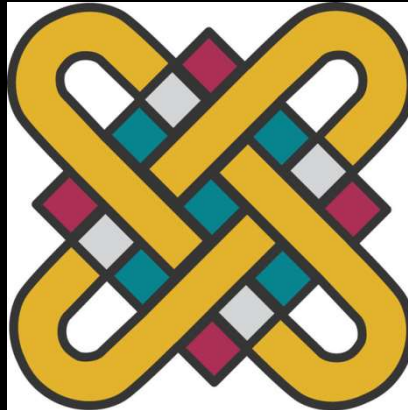








**ΠΑΝΕΠΙΣΤΗΜΙΟ ΔΥΤΙΚΗΣ ΜΑΚΕΔΟΝΙΑΣ
ΤΜΗΜΑ ΕΙΚΑΣΤΙΚΩΝ ΚΑΙ ΕΦΑΡΜΟΣΜΕΝΩΝ
ΤΕΧΝΩΝ**



**1^ο Εργαστήριο Ζωγραφικής
Κύκλος**

Το Χρώμα

**Γιάννης Ζιώγας
Αναπληρωτής Καθηγητής**